



SERVING CLEOBURY COUNTRY

APRIL 2022

UKRAINE

What more can anyone say about the heartless terror being inflicted upon Ukraine? As ever in war, it is the innocents who suffer and with modern communication facilities we see so much more than before.



In a very public show of support, the Ukrainian flag is being flown from the flagpole when other events do not take precedence.

This community has once again risen to help others less

fortunate. On Page 17 you will read of some of the measures in place and working to raise support. Local people are coming forward and offering a home to refugees who flee to this country as they seek safety for their children.

CLEOBURY FESTIVAL Councillor Paul French writes:

Preparations for our festival on June 4th are going well and as events are finalised they will be published.

If you feel that you would like to play a part, volunteers would make a huge difference at the start and finish of the day. The Festival volunteer group would be pleased to hear from anyone who wants to marshal the car parking, litter pick (equipment will be provided), lay out the field and put up signage, greet and direct visitors around the site.

If you can do one or more of these, we would love to hear from you.

Paul French 01299 270010 / 07808682715

MUCH ADO ABOUT CURLEWS

Two pages in this month's Clarion are dominated with appeals to help count and care for those birds with a most distinctive call - curlews.

The Clee Hill Community Wildlife Group are well known for their efforts to protect the breed, with Leo Smith and Chris Bargman watching over the operation and keeping records. You'll find their latest report on Page 51.

A new name to the Clarion is Polly Owen, writing on behalf of Curlew Country, based at Bishops Castle. They are inviting bird lovers to join their 13 mile Country Circuit on April 21st, which is World Curlew Day. We're spoilt for curlew choice.

**CLEOBURY COUNTRY
FARMERS MARKET**
IN AND AROUND ST MARY'S CHURCH
SATURDAY 16TH APRIL 2022
FROM 9.30AM TO 12.30PM



Victoria Allen Funeral Services

An Independent Family Business offering a
Personal and Professional Service

Over 25 years' Experience

Competitively Priced

Private Chapel of Rest

Golden Charter Pre-Paid Funeral Plans

Covering All Areas

Home Visits Available

01584 879035

24 Hour Service

8 Charlton Rise, Ludlow, Shropshire, SY8 1ND
www.vallenfuneralsludlow.co.uk
Email: vafs@btinternet.com



The Cleobury Clarion, April 2022

Volume Eighteen - Edition One



*New man in charge at Nineveh Care Farm - Martin Bowen.
See Page 15.*



*A Champion Pothole of the Month
See Page 51.*



*The Archers of Tele.
See Page 61.*

And On Other Pages...

5 - In Praise Of....

7 - Ludlow Rotary Cares

9- Fighting Cocks, Fighting Back

11 - Cllr Simon Harris writes

13 - Childe Endowment Fund

15 - The Gin Walk is Back!

17 - UKRAINE - CLEOBURY ACTION

19 - St John's, Doddington

21 - Stepping Out! Walking News

23 - April in the Wyre Forest

25 - Philip Dunne MP

27 - The CoCo Minibus

31 - Guide to Shropshire Churches

37 - The Curlews Return

39 - Cleobury Mortimer Benefice

41 - Simon Morton on Gardening

43 - The Royal British Legion

45 - Mrs Grumpy

47 -The Social Calendar

51 - More Curlew News

53 - Cleobury Hub

57 - Let's Beat the Scammers

59 - The Town Council Report

63 - Local Information



DRY CLEANING & LAUNDRY SERVICE
20 HIGH STREET, CLEOBURY MORTIMER
01299 270571

HOUSEHOLD & COMMERCIAL WORK WELCOME
FULLY ATTENDED, OPEN 7 DAYS

Self Service ~ Full Service Wash/ Dry/ Fold/ Ironing ~ Large Machine for Big Items
Service Washing for Duvets/ Blankets/ Sleeping Bags ~ Team Sports Kit Laundry Service
Equestrian Rug Cleaning ~ Laundry Service for Pet Items
Professional Shirt Service ~ Nikwax Wash & Proof for Outdoor Clothing

.... the place to air your dirty laundry!



RED HARE

45 HIGH STREET
CLEOBURY MORTIMER
WWW.REDHARESALON.CO.UK

01299 270702

YOUR
HAIR
IS
OUR
BEST
ADVERT

PPD FREE - PARABEN FREE - SULPHATE FREE - CRUELTY FREE

“Red Hare now offers a private hairdressing room. Perfect for those wanting more privacy, peace and quiet“



CLEOBURY CHIROPRACTIC

31 High St. Cleobury Mortimer DY14 8DQ

JS James
Smith
OSTEOPATHS

We offer both **CHIROPRACTIC** and **OSTEOPATHY**,
using gentle methods suitable for all ages.
Appointments available outside of normal working hours.
Both practitioners are fully registered, insured & regulated.

Sue Brown
MA MSc DC MMCA
CHIROPRACTOR

- * BACK PAIN * SCIATICA * POSTURAL PROBLEMS
- * JOINT PAIN * HEADACHES (arising from the neck)
- * Some SPORTS INJURIES

- PLUS** * COMPUTER (DSE) WORKSTATION ASSESSMENTS
* BACK CLASS – Weekly exercise class for those with back/neck pain.

iO
THE INSTITUTE
of OSTEOPATHY

Hands for Heroes
Free Chiropractic Care for War Veterans



01299 519351 / 07932 000028 / 07506 287191

www.notjustaboutbackpain.com

www.jsosteopaths.co.uk

GCC registered
General Chiropractic Council
www.gcc-uk.org

 **General Osteopathic Council**
I'M REGISTERED
Registration no. 9254
www.osteopathy.org.uk

CLOWS TOP

GARDENING CLUB

This month Ingrid Millington is going to talk to us about "The Dry Garden" (after the February storms, it is hard to imagine our gardens ever being dry again!) We are told, though, that climate change is likely to result in long, dry spells, even to be prepared for a Mediterranean climate.

One of the most famous dry gardens was created by Beth Chatto ("Right plant, right place" was her advice) The dry garden at Hyde Hall in Essex is a beautiful and impressive site. Both of these are on the dryer side of the country, but with the right preparation and planting we could all have similar results, albeit on a more modest scale!

So, come along and join us at Victory Hall on the 27th of April and hear what an expert has to say on the subject. Doors open at 7.45pm for the speaker at 8.00. We look forward to seeing you there.

Judith.Lawson

IN PRAISE OF..

When delivering the Clarion, it's natural to help Cleobury Country's Trade Card by getting that excellent publication out to the wider public. And when I had a kitchen emergency with the sink springing a leak, a quick look under the Building Services heading got me to Chris Ponsford.

He was out when I called on Friday, but his wife promised he'd call back when he got home. As he did that evening and came out to see the problem - a broken union and the parts he had in the van didn't include that fitting. He was off on holiday on Sunday, but would see what he had in the workshop at home. A call in the morning advised no luck there and he was off on holiday on Sunday.

Chris had been so helpful I wasn't going elsewhere, so got by until the next week, when he appeared with the parts to fix the union and a new tap to replace the one that had been dripping for longer than I cared to admit. No leaks or drips anywhere now.

Chris Ponsford is on 01299 841032 and I'd recommend him to friends and use him again JR

THE CREATIVE

WRITING GROUP

A select group gathered in March to offer their creations from the word 'Garden'. Sylvia could not make the meeting, so Vivian read her piece lauding the awakening of the carnival of Spring. Vivian then detailed her daughter's apartment in a converted Bolton mill, with garden and internal flowers in great abundance. The place does sound lovely.

Marian wrote with great enthusiasm about her allotment and the pleasure it gives, with her listeners nodding in agreement. The editor wrote about childhood near The Gardens in West Harrow and discovering the address later on when reviewing a book. We did wonder how much variety that subject would produce and it certainly worked. Marian rounded the evening off with notes on her dream garden.

In April we meet at 6.30 on the 11th to see what we have to say and write about 'Wonder'.



The Oak Boy
TRADITIONAL OAK FRAMING
SINCE 2011
07398 233443

John Caswell
Johnjocaswell@yahoo.com

SERVICES AVAILABLE

<ul style="list-style-type: none">➤ Flooring➤ Manufacturing & fitting doors & windows➤ Kitchens ➤ Cladding➤ Studwork➤ Bespoke Oak Framing	<ul style="list-style-type: none">➤ Landscaping➤ Patios➤ Brick & Stone work ➤ Roofing, Tiling, Guttering➤ General Building➤ Property Maintenance
--	---

Call now for a Free Quotation!



CM BESPOKE CARE

CareQuality
Commission
Registered

SPIC
Shropshire Partners in Care

Personal, Nursing and Domestic care.
Tailored to your needs.

Call for a free consultation

Tel: 01746 718816
Mobile: 07943834132

www.cmbcare.co.uk
www.facebook.com/cmbcare
email: cmbbespokecare@btconnect.com



07971 361901 or 01299 832484

Complete Bathroom Installations
Bathroom Refurbishment or Repairs
Wet Rooms
Professional Wall and Floor Tiling



For a quality and guaranteed service, call Stuart for a free quote
Highly Recommended / References available - see my reviews on www.freeindex.co.uk

FOR THE BATHROOM YOU DESERVE!

TDC CARPENTRY SERVICES

Fully insured qualified professional
Excellent workmanship and quality customer care
From hanging doors, fitting kitchens to bespoke projects

Tim Clare - 07890 519980



Phoenix Environmental Ltd.
Contaminated Land Consulting and Contracting

Bringing 17 years of experience to bear, we provide straightforward advice help guide you through planning, or deal with your contaminated land, geotechnical and geo-environmental issues.

Phoenix Environmental offer both site and office-based services including:

- Regulatory Liaison and Planning Approval
- Phase 1 Desk Studies (Geology, Hydrogeology, Hydrology, History)
- Intrusive Investigation (Phase 2) Design and Application
- Trial Pitting, Cable Percussive Boreholes, Dynamic (Window) Sampling
- Flood Risk Advice
- Geotechnical Investigation/Advice, Foundation Advice
- Risk Assessment (GQRA/DQRA)
- Remediation Strategies/ Verification Reporting
- Environmental Audits/Site Audits
- Site Based engineering and supervision
- Drone Surveys/Media Production

We'll be there to guide you through every stage.
www.phoenixenviro.co.uk

Contact us: email. enquiries@phoenixenviro.co.uk Tel. 07800 646691



LUDLOW ROTARY CARES

'Ludlow Rotary Cares' is the name of a scheme aimed at offering grants of up to £500 to charities and other organisations supporting community life in and around Ludlow.

Over the last seven years the Rotary Club of Ludlow has been able to invest over £30,000 in 60 local community projects in this way. After a gap of two years when fund raising has been difficult due to Covid restrictions, we are delighted to be able to invest again in our community and therefore invite local charities and other community organisations to apply for a grant.

The Club's approach: The Club intends to be very open minded about the types of activities it will support so long as the project or programme responds to a community need in or within 15 miles of Ludlow and meets its criteria on the giving of grants.

What the Club will need to understand is exactly what the money will be used for, who will benefit from it and how

much difference a grant of up to £500 will make.

The Club is keen to hear from organisations, including those that have applied in the past whether or not they were successful. So, if you are involved in one which might benefit, do follow the link to download an application form www.ludlowrotaryclub.org.uk

Closing Date. Organisations which meet the criteria will need to submit their applications by April 10th

Presentation. Those shortlisted will be invited to an evening event at Ashford Carbonell Village Hall, SY8 4BZ on May 24th, at which they will be asked to explain their project to a small panel. There will also be an opportunity to meet other applicants as well as members of the Rotary Club. Cheques will be handed out very soon afterwards!

Follow Up. A condition of any grant is that within six months of being awarded the grant the recipient will provide Ludlow Rotary Club with feedback on how the grant has been spent, including where possible photographs.

Contact. For further information please email [Alis](mailto:Alis@ludlowrotaryclub.org.uk) at lrc@ludlowrotaryclub.org.uk

ARE YOU MISSING A GREENHOUSE COVER?

Rae Livesey at The Old Police House in Stottesdon writes:

"I have a green plastic greenhouse cover that blew into my field a few weeks ago. It is the middle sized one and undamaged. Telephone 01746 718 881." *Rae Livesey*

PARISH HALL A.G.M.

The Parish Hall committee advise that their Annual General Meeting will be held in the Hall in Lower Street at 7.30 on Wednesday May 18th. All interested parties are welcome to attend.

SILLY BIT

Did you know that in the Canary Islands there is not one canary? And in the Virgin Isles? Same thing - not one canary there, either.
Suzanne France

Flowers By Fiona *est 1991*

**Fresh Flowers made to order
Special Occasions
Weddings, Anniversaries, Birthdays
Sympathy Tributes**

**19a High Street,
Cleobury Mortimer**

Tel: 01299 272 995

Professional. Affordable. Local.



Electrical Installations

No matter the size, we can gladly undertake all Domestic, Commercial and Industrial installations you require.

A family run business, with over 25 years industry experience.

From period properties to agricultural solutions, we provide a professional service every time. We also do call outs and emergency work.

Renewable Energy

Protect yourself from rising energy bills by considering renewable energy.

Solar PV is the most accessible way you can save energy by producing electricity from the sun. Earn a tax free income from the electricity your system produces.

Speak to us about how renewable energy can benefit you or your business.

Whatever your query, give us a call.

T: 07971 096267 / 08450 564173

W: www.awe-services.co.uk

Two Staks, Eagle Lane, Cleobury Mortimer, Worcs. DY14 8RA



THE FIGHTING COCKS - FIGHTING BACK

When Darren and Hannah took over the Fighting Cocks pub in Stottesdon they had the matter of Covid-19 to contend with and their plans to improve the place. On top of that, Hannah was suddenly taken ill and couldn't help with the mountain of work. It was what management manuals might call "A challenge".

It's to their credit that strength of character and sheer guts got the job done and the place is now blooming and very busy. A quick walk through showed a change in emphasis; this is now a family pub and restaurant, with no space given over to the shop that once operated. That's now another room to sit, eat, drink and relax.

They have a full programme of events and we'll be carrying details in the Clarion's Social Calendar every issue. Bingo will be a monthly feature, eyes down at 7.30, tables can be reserved and if you'd like a basket meal to keep hunger pangs at bay, they come at a very reasonable £6.00 a head. Next date: April 21st.

A Fun Quiz sounds good. 7.30 starting time again and tables can be reserved. Teams of four or less, entry fee £5.00 and again basket meals available at £6.00. Top score wins a two course meal for four. April 7th is the next date.

And live music is back, with the Solar Mohicans booked for April 8th, no entry charge. By the time you read this, there will be a pool table in the Barn Room and there should be a darts board up as well.

The result of all this work is a very busy place that's drawing in families and friends. If you want to phone and book a table they're on 01746 718270.

FROM THE BANDROOM

The annual area contest is over, not a very pleasing result, perhaps it was something to do with the 4am start...So on to the Spring/Summer batch of concerts, we have an exciting new programme to practice!

Our first concert of the year will be themed 'A Night at the Movies' and will be held in the Parish Hall on Saturday 14th May, tickets will be £10 each (to include popcorn!) there will also be a bar. Tickets are available from Amanda Wilcox

on 01584 891199 or Donna Tracy 07791 642214 or any band member, we look forward to seeing you there.

If you are a local business and looking to support a local community group, we would love for you to get in touch (Amanda or Donna as above). Running a brass band is quite costly and we are actively looking for sponsorship to assist with this. Come along and hear us play on 14th May - you might be very surprised and could welcome the addition of a brass band to your corporate events as something a bit 'different'!

Katie Griffiths

BIG RACE NIGHT AT LACON CHILDE

Sarah Price reports a very successful race night at Lacon Childe school that we carried an advert for in the Clarion. The school would like to thank the community for their support, which saw the total raised for the pupils get up to £1900. Great stuff!

SILLY BIT

"When I grow up, I'd like to be a retired Lottery winner."

"You don't appreciate what you got 'til it's gone. Toilet paper is a good example."



The Well Being

Holistic Therapies

Cleobury Mortimer DY14 8AS

www.thewellbeing.co.uk

April Boardman

Reiki Master ITEC MFHT Dip Hyp

Do you have aches & pains, ongoing health issues or just need to relax? Help is at hand!

Deep Tissue & Remedial Massage

Reiki & Crystal Healing


Hot Stone Massage-Aromatherapy- Reflexology

Pregnancy Massage & Hypnotherapy

20% off your 1st treatment!

Tel 01299 513148 or 07881494036 or Book Online!

People when thinking of having Home Care often ask who are your staff? What sort of company are they?

TLC are a family run care provider supporting people with Disabilities, Dementia, Aging Population and Acquired Brain Injury to remain living at home for as long as it is safe to do so. Clients when considering home care will often find it difficult to accept and wonder about who are the staff and what qualifications they have? I cannot speak for other companies, however in our company it is made up from many sectors of our society and when these are put together, we have an Outstanding Team. 

One of those sectors are the future NHS professional, we have Daisy who is in her last year of her training to be a midwife, Lucy who is working towards the end of her training to be a Physiotherapist. Christina and Aila about to start their journey into nursing. We have further staff who have just been accepted into the NHS. These lovely kind young adults not only study many hours both in university, on hospital wards, they also give to us and have helped us support our clients for many years! Most joined us while still at college.

TLC have ex-nurses that come to us after raising their family and some, in recent times have re-joined their colleagues in the NHS.

We have staff who have raised their kids and now want a career, TLC will train or retrain people to help people reach their full potential and become one of our Outstanding Team.

We encourage kind caring and honest people of all ages and backgrounds who want to make a difference to people's lives to join our team. TLC invest heavily in people with ongoing support and training to help our new colleagues achieve their goals and reach their full potential. Once initial training is complete and they have been assessed as competent, TLC Induction Manager and our Training Manager will support staff through to achieve their Level 2/3 in H&S Care

Our Training

TLC's Training Team offers full free training on site and support staff through their Care Certificate. We have strong connection with an outside Training Provision who help our staff to achieve their Level 2/3 in H&S Care. Currently we have 32 members of staff that have already achieved Level 2/3 in Health and Social Care. We have qualifications at level 4 and five of our Senior Managers have Level 5. All staff that are new to care are required to achieve Level 2 within the first two years of their employment.

Contact us

For further enquiries please regarding Care or employment please ring TLC Care at Home 01299 272897 for an informal chat. Visit www.tlccareathome.com or wecare@tlc-careathome.co.uk

*Unlock your Potential.
Success starts here!*

COVID-19 Update

All our staff are provided with full PPE's including Gloves, Full Aprons, Sleeves, Visors, Gloves Surgical Masks.

Video training on Donning and Doffing PPE's sent out regularly.

Staff sign health declarations daily, Staff have weekly Covid-19 test. Most of our staff have now been vaccinated against Covid-19. TLC work closely with government regulation and update our risks assessment accordingly.

SHROPSHIRE COUNCIL BUSINESS

I submitted this motion to Shropshire Council in February 2022:

“Ban Sky Lantern and Balloon Releases from Council Property.”

For many years the Marine Conservation Society has run a campaign to make sky lantern and balloon releases illegal by classifying this activity as ‘littering’. The Society has not been successful.

The Society has also encouraged local authorities to ban these activities from property the authorities own. This approach has had some success. Worcestershire Council has banned both sky lantern and balloon releases, while Hereford has banned sky lantern releases. I understand that Shropshire Council banned sky lantern releases several years ago; although this ban is not reflected on the Society’s website.

These releases need to be banned because: Over the past five years, on average three balloons every 100metres have been found during the Great British Beach Clean; balloons marketed as ‘biodegradable’ can last up to four years; animals can be injured through ingestion, entanglement and entrapment.

Marine turtles are particularly vulnerable. The digestive tract of a juvenile green turtle, washed up dead near Blackpool in 2001, was completely blocked by marine litter. Animals get tangled up in balloon ribbons and string, restricting their movement and the ability to eat. Sky lanterns are a fire hazard to crops and thatched roof properties.

I move the following motion: All Sky Lantern and Balloon releases to be banned from all Shropshire Council property; Shropshire Council request the Government to classify all such releases as littering and made illegal; Shropshire Council will run a media campaign to discourage all such releases within the County.

The motion was passed unanimously; no party politics. I believe this is an important environmental issue and I will encourage our local Councils to adopt the same policy and ban sky lantern and balloon releases from their land.

I will also be approaching our Hereford Diocese to adopt the same policy.

Councillor Simon Harris

CLEOBURY YOUTH PARTNERSHIP UPDATE.

The Cleobury Youth Partnership plans to be at the

Queens Platinum Jubilee/ Cleobury Festival celebrations on June 4th on the Playing field site. The Youth Groups will be organising activities throughout the day with help and information available on the activities available from each group at their meetings throughout the year.

For further information and offers of help contact Madge.shinerton1@gmail.com OR 01299 271186

THE FOOD BANK GROWS

From this month on, the Food Bank at the Market Hall, will be open on a Friday evening from 6.00 to 7.00. The first occasion will be on the 6th of this month and from then on it will be the first Friday in each month.

“We have local families that struggle to come on a Friday morning,” Councillor Debbie Brown explained. So to help their customers, this extra late hour once a month has been added to the service.

As ever, donations of non-perishable and canned food, pet food and toiletries are welcome. You’ll find donation points at the Parish Church, The Market Hall, th Co-op, the Library entrance, the Severn Hospice shop and Select and Save. The contact number is:

07519 885 943



UPHOLSTERY & INTERIORS

Rosemary Jones

Mob: 07837 609229

Phone: 01584 861823

Email: info@charltoninteriors.com

www.charltoninteriors.com



BESPOKE YOGA TUITION



Relax Breathe Stretch Tone

One to one Yoga lessons

BWY trained teacher with over 15 years experience

Can travel to your home

Angela Kazimierczuk

07870 506655

CLEOBURY MORTIMER PARISH HALL.

The largest hall in the area.

We are open again so would you like to celebrate an event, party, wedding, or just a get together?

We are able to cater for small or large parties, sit down dinner parties for up to 100 people with or without a bar.

Come and have a look at what we can offer.

To book call Janet on 01299 271070.

'FLICKS IN THE STICKS'

7.30 SATURDAY APRIL 16TH

"WEST SIDE STORY"

Steven Speilberg's version of the great classic.

Licensed Bar. Admission £4.00

THE TOWN'S BEST VALUE VENUE

Do you know a 2, 3 or 4 year old who would like to join our fantastic nursery?



Ofsted
Outstanding
Provider

Stottesdon Gateway
NURSERY

We really care and make learning fun

We can offer:

- ✓ A safe and nurturing learning environment with dedicated and caring staff.
- ✓ High quality provision with strong links to Reception.
- ✓ An amazing outdoor area and use of the school facilities and space.
- ✓ Nursery places for 2, 3, 4 year olds, available from September 2021
- ✓ From 15 - 30 funded hours available.
- ✓ BEFORE & AFTER SCHOOL & HOLIDAY PROVISION for children aged 2 - 11 years old.

TO BOOK A TOUR :

Stottesdon C of E Primary School

Stottesdon

Shropshire

DY14 8UE

TEL: 01746 718617

Nursery and Wrap-around sessions (term-time)		Fees
Early Start	7:30am - 8:00am	£4.00
Breakfast Club	8:00am - 8:45/9:00am	£4.00
Morning Session	9:00am - 11:30am	£10.00
Lunch club	11:30am - 12:30pm	£4.00
Afternoon Session	12:30am - 3:00pm	£10.00
After School Club	3:00pm - 5:30pm	£10.00

THE BREAKFAST CLUB

24 members of the Breakfast Club met at the Golf Club in March to hear of the progress Phil Howl has made with the restoration of the old station building at Neen Sollars. The original Tenbury & Bewdley Railway opened in 1864, and closed down 100 years later. The station was then sold and lost many of its characteristic features until bought by Phil in 2013. During his first visit two years ago, he described some of the work he had done, largely to the exterior.

The original station never had gas or electricity, so Phil did not want to restore the building exactly to the state it was in 1864, but was determined many of the external features should be restored or recreated, and recent photos of the exterior showed an excellent job done.

Getting new oil lamps made for the exterior of the building was amazing: find old photos, inspect surviving examples of railway lamps, locate a maker of such things and commission their making.

To create an attractive and functional interior, no attempt has been made to restore every

Victorian detail. Phil has incorporated period details of design and materials to make a comfortable home, sympathetic with the qualities of a mid-Victorian building.

Work in hand includes a new garage and workshop, designed to emulate the style of the original metal goods shed with curved roof and corrugated metal cladding. The original shed itself still stands and will be the subject of a restoration project.

Phil impressed us with his energy, perseverance, and success in preserving an attractive part of our local history.

The talk was followed by the Club AGM. Angela Drennan has earned our gratitude for maintaining the Club single-handedly, and we were relieved to learn that she is happy to continue in this role, so was re-elected *nem con*.

The next meeting of the Club is scheduled for April 12th at the Golf Club, where our speaker will be Cllr John Greaves, tackling the pertinent problem of 'Climate Change'.

Mark Baldwin

THE CHILDE ENDOWMENT FUND

Students residing in the parishes of Cleobury Mortimer, Neen Sollars, Milson, Coreley, Hopton Wafers, Farlow, Wheathill, Aston Botterell, Stottesdon, Kinlet and Neen Savage are invited by the Trustees to make applications to the above fund for financial assistance to help further their studies.

Details and application forms can be obtained from Lloyds Bank, Cleobury Mortimer, from Lacon Childe School or The Reverend Justin Parker, Clerk to the Trustees of the fund at Adam House, Birmingham Road, Kidderminster DY10 2SA. The closing date is June 24th.

BROOME PARK FARM B&B IN THE NEWS AGAIN

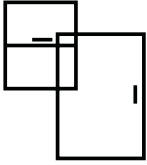
Broome Park Farm's very successful Bed and Breakfast business is in the finals of the West Midlands Tourism Awards for the Best B&B Guesthouse category again. The judges called already and the winners were announced at a Gala Dinner at Coombe Abbey Hotel on March 31st. We'll tell you the outcome next month - fingers crossed!



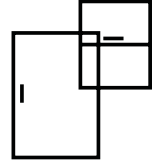
Kim Stanley
30, High Street
Cleobury Mortimer
Shropshire
DY14 8DQ

Tel. 01299 271800
www.kimstanley.co.uk





Ashley Bannister Windows & Doors



- UPVC Windows & Doors
- Composite Doors
- Porches & Conservatories
- Glass Unit Replacement
- Fascia, Soffit & Guttering
- Handles & Letterboxes
- Hinges & Window Restrictors



No Job Too Big or Small
Certass Approved Installer
Local Tradesman Based in Highley

ashban94@hotmail.com
Ash: 07817 785245



Twit - Twoo Falconry

- **Static and flying displays with owls & falcons**
- **Fetes and fayres**
- **3 hour bird experiences based in clows top**
- **Garden parties and birthdays**
- **1-2 hour talks for indoor hall and outdoor visits**



**For quotes and bookings ring Steve Woodison 07738014884 or
Email scw1960@hotmail.co.uk**

MIKE AND SHELLEY ROBERTS

Haulage Contractors

Supplier of Aggregate and Asphalt products

12 Lacon Close, Cleobury Mortimer DY14 8EF

07860 669350

07966 045012

Clarion Clippings - The Local News

THE GIN WALK

Local tiplers can rejoice!

We are very excited to announce that at long last the inaugural Gin Walk will take place on Friday May 20th, from 7.00 to 10.00pm. This event has been organised to support The Severn Hospice who provide specialist care and support to families across Shropshire, Telford and Wrekin and Mid Wales. The pandemic has been a very challenging time for all charities and so our support of this charity is more vital than ever and the Gin Walk will do much to support the important work of the Severn Hospice.

If you obtained a ticket for the original event (postponed due to Covid-19 restrictions), please contact Paul Serrell-Cooke (M: 07791 378240) to arrange a replacement ticket/tickets. If you are yet to obtain a ticket, please also contact Paul.

PLEASE NOTE that the number of attendees will be limited to a maximum of 70 ticket holders, on a first come, first served basis, which must be obtained before Thursday May 19th (unfortunately tickets will not be available on the night). Tickets will act as your passport for the evening and holders will be able to enjoy a

social event, staged at three venues in Cleobury Mortimer, with the chance to savour four premium gins, complemented by Fever Tree tonics, with nibbles provided by each venue. Alternative soft drinks, beer or wine can be available by prior request. Please email details at least 24 hours in advance of the event to cleobury.ginwalk@btconnect.com

We plan to hold a raffle with a number of exciting prizes, so please bring suitable cash for this and expect to be cajoled. The draw will take place on Saturday May 21st and winners will be contacted to arrange collection of their prize(s).

We very much hope that this will be a fun event for all to enjoy as well as a welcome opportunity to catch up with old friends, as well as meet new people.

Paul Serrell-Cooke

NINEVEH CARE FARM

This remarkable place was closed for the first pandemic lockdown and has stayed open since then unless a positive test dictated otherwise. That amounts to 95 percent open since Christmas 2020.

Things have changed slightly, with long term staffer Martin Bowen looking after the day-to-day running while founder Pippa Bannister looks after admin and future development. It's a busy place, with 13 employed staff and volunteers to help them. They still need help, people with compassion who can work and learn to earn certificates that confirm their competence.



Martin Bowen is now managing operations at Nineveh.

There are 40 service users on the roll, learning a range of manual skills and making a range of items from materials like old pallets that they sell on through their Facebook page. One handy service that I can personally recommend is Steve's car wash, available any day he's there. This is a very good place that deserves support. If you can help, they're on 01299 832864.



VAUXHALL
at
LUDLOW MOTORS



All-New MOKKA
From £20,940
3.9% APR
Representative

Contact us today
Bromfield Road, Ludlow, Shropshire SY8 1EN
Telephone: 01584 876 444

Worcester Carsales Ltd trading as Ludlow Motors is acting as a credit broker and not a lender. We can introduce you to a limited number of finance providers and may receive commission from them for the introduction.



Find Your Smile at Cleobury Dental Practice

Whether you're looking for dental implants to replace missing teeth, invisible braces for a straighter smile, boosting your confidence with teeth whitening or a dedicated dentist for your regular care, you can find it all here in the heart of historic Cleobury Mortimer.

- Modern, state of the art facilities and the latest dental technology
- Free car parking adjacent to the practice and step-free access to our dentists' surgeries
- Enjoy private dental care from just 47p per day with our membership plans
- Highly experienced in helping those with dental phobias

Services Provided

- Tooth-Coloured (White) Fillings
- Sedation for Anxious Patients
- Teeth Straightening with Braces and Invisalign
- Dental Implants (Replacement of Missing Teeth)
- Emergency Appointments Slots Available (first come first served)
- Hygienist Services
- Private and NHS Care (NHS subject to capacity)

Opening Hours

Mon, Tue, Wed and Fri **9am-5pm**
Thu **9am-7pm**
Saturdays **by appointment only**

Tel: 01299 271 747

www.cleoburydental.co.uk

BDA Good Practice
Member

 **invisalign**
PROVIDER

1 CHURCH DROP-IN

From the beginning of April the Pastoral Care Group will be running a Drop In session at the church every Thursday morning from 10.00 am to 11.30 am with free tea, coffee and biscuits. There will be a listening ear if anyone wants it or just a chance to sit and chat and share problems. We already run this once a fortnight for anyone just wanting to get out for a chat and that will continue, as there is ample room in the church for everyone. When we get refugees coming to the town we felt it would be important for them to have somewhere they could go to meet up with other refugees. It may also be helpful if hosts and potential hosts have an opportunity to come together as they might want to exchange experiences, tips etc. If necessary we shall arrange for agencies offering help to visit or be able to refer people to the right place. What we offer will remain flexible so that we can respond to need. We

want to stress that the present arrangements are continuing uninterrupted and we shall still be able to sit and chat with those people who already come regularly.

Liz Smith

2 COOKING UP AT COLLIERS

Haarriet Wakeford at Colliers' Cookery School explains:

We have joined the #cookforukraine forces and will donate £5 towards UNICEF (UK's Ukraine Appeal) for every course throughout the year booked during March and April. If you would like to learn more about the campaign or how as a cook, you can get involved just click on this link www.justgiving.com/fundraising/cookforukraine/

Harriet

NINEVEH CARE

FARM HAS A PLAN

As you would expect of a place devoted to caring for people, the Care Farm has a plan that just needs consent from Malvern Hill Council to

agree temporary planning consent to set the ball rolling. Pippa Bannister is overseeing the idea, which would see up to six caravans parked on a field site, restored where necessary by the team already there and available to families with a rural background.

Vans have chemical toilets and Pippa sees families being taken to volunteers' home for a bath and a meal. They can be taken by van or choose to walk. As Pippa logically pointed out: "If they've walked across Ukraine to escape here, they won't worry about a few miles!"

To help the refugees find work, the Farm's minibus goes into Kidderminster at 8.00 every morning and could deliver them there, then pick them up when delivering the Farm service users home.

It all depends upon the basic consent being passed. If you'd like to get involved in this very good cause, contact P i p p a o n pippamaryb@gmail.com

Firewood

Seasoned logs, barn dried & ready to burn.

Free local delivery -01584 890993 or 07970878224

Various size loads available



Paul Harding Tree Services



John Brazier & Co

Accountants & Business Advisors

Accounts – Company, Partnership and Sole Trader
Tax Returns – Corporation Tax and Personal
VAT - Returns and advice
Payroll Service including RTI

For a personal and
professional service

Contact John Brazier or Sarah Morgan to discuss your requirements on 01299 271473 or email at info@johnbrazierco.co.uk. Alternatively, you can arrange a meeting at 53, High Street, Cleobury Mortimer, Worcestershire DY14 8DQ

01299 271 473



Bumperscuff Rescue

● Body Shop excellence ● Home convenience

Cost effective car body repairs!

● Bumper scuffs ● Paint scratches
● Kerbed alloy wheels ● Small dents

Free no obligation quotes, all work fully guaranteed Call **Andy Taylor** now on **07834 322216** or visit www.bumperscuffrescue.co.uk

CLEOBURY MORTIMER CARPETS

Supplying and Fitting of:-

- Carpets
 - Natural floorings (Cair, Sisal & Seagrass)
 - Vinyls
- Carpets supplied by: Victoria Carpets, Fibre Flooring
& Alternative Flooring at Unbeatable Prices

Contact Details:-

Address: 26 High Street
Cleobury Mortimer •DY14 8BY
Telephone: H: 01299 270095
M: 07739 186163
Email: garethleach@aol.com
or check out our new website
www.cleoburymortimercarpets.co.uk

INFINITE ELECTRICAL SOLUTIONS

For all your electrical needs:

House rewires

Fuse board upgrades

Electric showers

Need an extra socket or light installed?

No job too small

For a FREE quote

Call Lloyd 01584 811184



SAINT JOHN'S, DODDINGTON

An Invitation

We invite you to join with Archdeacon Fiona and the congregation of St John's Doddington to celebrate the inauguration of the newly accessible path on Sunday May 1st. This will mark the first stage of opening up the church for all kinds of community use as well as the worshipping centre of the Parish.

This is a time to recognise and be thankful for the effort and hard work that has gone in to making this a reality. It is truly a light set on the hill. The service starts at 3.00, followed by refreshments. We owe a great debt of thanks to Garfield Weston Foundation whose grant of £15,000 allowed us to start work on this, as well as to Church Walking Pilgrimages for a grant, the community, including Doddington Lodge, who have helped us fundraise a proportion of the cost, and MQP Clee Hill Quarries who generously donated material to build the path.

Now that we can offer this better access to the church, we will be running an exhibition over the Queen's Platinum Jubilee weekend, looking back at Doddington over the last 70

years. If you have any memories you would like to contribute to this, please get in touch. For up to date news follow us on Facebook: @StJohnsDoddington, or check our website: www.achurchnearyou.com/church/10505/ Email: stjohnsdoddington@gmail.com
Celia Gibb 01584 318036

HORTICULTURAL SOCIETY

In March Rachel Strivens, assisted by Caroline, discussed the alchemy of turning garbage and brash into black gold, i.e.compost. Rachel talked about the importance of composting, and how to begin. The method requires heat and oxygen achieved by a 50/50ish mix of garden greens, which provide nitrogen and moisture -and brown dry matter, which is high in carbon and promotes airflow and excess moisture absorption.

And you need a compost bin. Shropshire Council will make available standard bins at discounted prices; just enter your postcode at 'getcomposting.com' for more details. Site on soil to give access for the worms, and in a place of some warmth, but not too much. Important not to fry the worms.

Why should we compost? By 2024 peat will no longer be an ingredient of retail horticulture, and effective

alternatives have still to be formulated. The big part of the answer is, the benefit to the environment, by building and maintaining soil health, encouraging biodiversity and reducing our reliance on chemicals and fertilisers.

The more personal aspect is, composting will benefit your pocket and planting, providing a free, nutrient-rich additive, and give you some control over the health of your garden.

Of particular interest for those in Cleobury, helping to promote an open structure to our solid clay soil.

Our next meeting is on April 11th at 8.00 when Rosemary Winnall will talk on "Flower Power". Our venue is The Community Room, St Marys Place, Cleobury Mortimer.

So get ccmposting; the worms will come!

Linda Ashman

CAR BOOT SALE

There will be a Car Boot Sale at St Mary's church on Saturday May 14th, from 9.00 to 1.00.

The booters will be allowed access from 8.30 and the charge for them is £5.00 a car. Light refreshments will be available and there are toilets on site.

Parking for the public will be at the bottom of Pinkham, on the car park. More details and bookings through Yvonne Colquitt on 07790 890 040.



Grainger Jones your local financial adviser

Grainger lives in Cleobury Mortimer giving the residents and surrounding areas a dependable financial planning service.

- **Wealth Management**
- **Retirement Planning**
- **Investments & Savings**
- **Family & Business Protection**

An initial consultation is available at no charge

To book an appointment or just have a chat, please contact Grainger below.

tel: 07974 100089

email: grainger@meridenfp.co.uk

website: www.meridenfp.co.uk

CARTER'S ANTIQUES



We are looking to purchase all manner of antiques, jewellery, coins, medals and curiosities.

For a free valuations kindly telephone
John Carter: 07779 311792
 Or email: johnbarney743@gmail.com

SINGING LESSONS

Professional singer and experienced teacher recently moved to this area
 Vacancies available

All styles, ages, standards welcome
 Contact Angela Kazimierczuk on
 07870 506655



Natalie Taylor Dip CFHP MPS Pract.

Specialist Foot Health Practitioner

Specialising in:-

- In-growing toenails
- Fungal infections
- Nail trimming
- Verrucae
- Calluses
- Corns

All from the comfort of your own home.

If you would like to make an appointment, please call on **07779 113982** or **01584 890112**



COUNTRY SKILLS

CPCS/NPTC Approved—fully insured

- Outside Renovation
- Tree Surgery, Hard Landscaping
- Slabbing and Fencing
- Decking, Roofing
- Contract Mowing

Call for a free quotation

R. Price & Sons

Mobile: 07967 140720 Email: roger@country-skills.co.uk

Painter/Decorator Christine Smith

Friendly, local, female professional. Any job considered: including Indoor/outdoor, walls, windows and doors, wallpaper & preparation. DBS checked. Fairly priced. Free quotes.

Call: 07977296335

E: clsartcontact@gmail.com



Precious Memories

Funeral Celebrant - Carole Clayton

07971 543790— 07942 774560

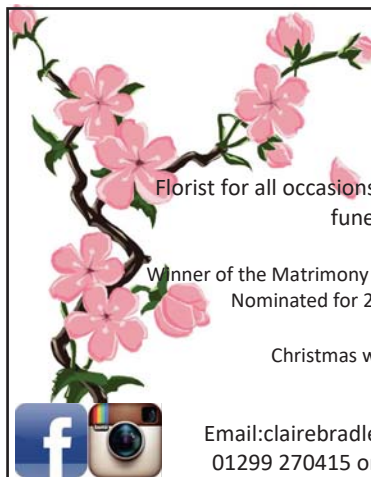
South Shropshire—North Herefordshire—North Worcestershire

Celebrant@hoskingsfuneralsdirect.co.uk

www.hoskingsfuneralsdirect.co.uk/celebrant

FB: @preciousmemoriescelebrant

Everyone has a story to tell—I'd be honoured to be the one to tell the story of your Loved One.



Claire Bradley
Floral Designs

Florist for all occasions, specialising in wedding and funeral flowers

Winner of the Matrimony Award 2020 Best Wedding Florist
 Nominated for 2021 Matrimony Awards

Christmas workshops available



Email: clairebradley1@icloud.com
 01299 270415 or 07980 580770



Domestic oil-fired boiler breakdown & maintenance services.

27 years' field-service experience with leading UK boiler manufacturer Worcester Bosch.

Donovan Taylor

Tel: 01299 828670 or 07807 837040

donovan.taylor@sky.com

www.greenstar-boiler-repairs.com

Caring about your environment and providing an honest, professional & reliable service you can trust

Stepping Out! Who's Walking, When and Where.

ROCK PATHFINDERS

This month's walks:

Thursday 7th. 10.00am start from Droitwich Gateway car park, Hanbury Road B4090. WR9 7DU

Thursday 21st. 10.00m start from Astley Village Hall, Ridleys Cross, Astley DY13 0RF

Further details::
www.rockpathfinders.uk

C.M. FOOTPATH ASSOCIATION

March brought significant signs of Spring. It was lovely to see the snowdrops make way for daffodils, celandine and the hazel catkins.

The Parish Walk on March 6th was based on CMFA leaflet No 2 "Over the Waters to Worcestershire". The route uphill to Reaside Manor was rewarded by the amazing views over the Teme Valley. We then looped back along the Bayton Road through the Mawley Estate to Pinkham and onto Cleobury. The weather was fine but the fields still rather slippery underfoot. This month's outing on April 3rd is our Daffodil Walk, meeting as usual outside the Market Hall at 10.00am.

On May 1st the Parish Walk starts at Cleobury Golf Club. Would anyone interested in joining the walk please meet there for a 10.00am start.

On March 9th the Walking for Health group was able to find a dry and firm walk along the River Rea. We crossed the river on the bridge at Papermills, followed the riverbank to Walford Bridge returning past Cleanlyseat Farm and Workhouse bank. Many of our regular walkers have lived in Cleobury virtually all their lives. The walks are often a time to share their knowledge of the town with newer residents, making the walk more relevant and interesting. In April we will meet on 13th and 27th outside the Market Hall at 10.00am.

It was a wet morning for the Footpath Work Party but this didn't dampen the enthusiasm! Two stiles were replaced, one with a kissing gate and the other with a gate. Where ever possible we try to repair stiles thereby preserving resources but these two were very rickety and beyond mending. After the rains the ground was slightly easier to dig. The volunteers

were split into two teams and the work progressed well.

The Social Walk in March took place in the Wyre Forest. Starting in Button Oak the route descended along stone forestry tracks to Dowles Brook. A refreshment break at Knowles Mill gave an opportunity to have a look at this preserved 18th century mill which is now owned by the National Trust. It is worth a visit particularly for anyone with an interest in industrial history. The route crossed the brook and up the embankment to the level path along the disused Tenbury to Bewdley railway line. Forestry tracks winding up hill through the woodlands completed the walk.

The Cleobury Festival is on the weekend of The Queen's Platinum Jubilee, 4th and 5th June. The CMFA Parish Walk on Sunday June 5th will be our contribution to the celebration. Information about the route and timing will be available soon.

CMFA activities are on our website www.cmfa.co.uk and also on Facebook. *Veronica*

Local Mechanical Workshop

- Specialist in vintage pre-war vehicle repairs
- Pre 1970
- Fabrication, welding
- MOT preparation & repairs
- Cam Belt replacement
- Electronic problems
- 5 tonne hydraulic lift
- 3.5 tonne horseboxes

Email: mikeytwonames@icloud.com
Tel: 07468 521816



WINDSOR PRICE REPAIR SHOP
Automotive

Unit 1, Hillocks Farm,
Cleobury Mortimer, DY14 0EB.

Mark Pearce

Landscape, Design and Rustic Garden Furniture

- Fencing
- Patios
- Drives
- Decking
- Garden Sheds
- Summer Houses
- Fence Panels
- Log Stores



And Much More

Top Quality Fully Treated Timber Products

Mobile: 07875425028

Tel: 01746718404

Robert Bradley Logs

07794 798616



*Seasoned Firewood, Hardwood,
Softwood or Mixed loads of logs.
Free Local Delivery*



Fresh milk and cream from
Cleobury Mortimer

www.mawleytownfarm.co.uk

01299 270359



SKELLERNS

DOORS & WINDOWS



- UPVC Fascias & Guttering
- UPVC Windows, Doors & Conservatories
- General Home Improvements
- Re-roofing & general building work
- Replacement Glass
- Patio Jet Washing



Free No-Obligation quote. FENSA registered company with years of experience

Call Mike on: 01886 812250 or mobile: 07814 577739

www.skellersndoorsandwindows.co.uk



The cacophony of birdsong on the forest edges announces that spring is here. April sees the arrival of summer migrants such as Swallows, Redstarts, Chiffchaffs and Blackcaps, and we hope to hear the evocative call of the Cuckoo. This seasonal explosion of song is a way of establishing the territories in which breeding pairs will nest and find the food needed to rear their young. The nature of the territory depends on the habitat which that bird needs: some preferring heather and young birch, for instance, while others find food and nesting holes in mature oak trees. The size of the territory depends on the abundance of resources and the pressure of competition from the neighbours. To attract a good number and variety of birds there needs to be a patchwork of different habitats with the range of tree species and ages of growth present in a well-managed woodland. As Wyre has broadleaved and coniferous trees with areas of wetland, heathland, pasture, orchards and gardens all intermingled it offers a relatively attractive home for resident birds and summer visitors. In the past, however, it seems that a structure of woods enclosing more open spaces of heath and scrub provided a habitat for numerous Cuckoos, Nightingales and Nightjars in Wyre (see 'The Nature of Wyre' edited by Brett Westwood, Peter Shirley, Rosemary Winnall and Harry Green).

As I have mentioned in these articles before, the national picture for woodland birds is far from encouraging, with an overall reduction in numbers of over 75% since 1970. The Wood Warblers are becoming very scarce in Wyre: they, like the Chiffchaff,

nest in low shrubs near the ground and are very susceptible to disturbance. Though the major factor in their decline may be the loss of their winter habitat in Africa it's still up to us to do what we can here to conserve this delightful summer visitor.



Pied Flycatchers will also be arriving soon and, like Redstarts, look for holes in mature oaks to nest in. Mick Farmer's photo shows a male Pied Flycatcher investigating a bird box that provides an artificial nest hole. At Uncllys we need to refine our nest box positioning and management to make sure that they have the best chance of attracting the rarer birds we wish to help. Temporarily blocking the holes to stop them all being occupied by Blue Tits and Great Tits keeps nest boxes available for later arrivals but it's difficult to get the timing right. We have been lucky to have Redstarts nesting for the last few years in an orchard tree nest box and subsequently in another which looks unappealing, having no shade at all, but offering good security from the farm cat and other predators. More bird boxes, in a variety of different situations, can only be a good thing.

Linda



Home Support Services

All staff enhanced DBS checked with over 20yrs experience and training within the local authority/social services mainstream and dementia care sector. Fully insured.

Are you in need of support with the following basic day to day tasks?

Assistance during the day or night

Companionship

Shopping/Household tasks

Completing Forms

Pet Care

Attending social events/ appointments

Contact Liz

Tel: 01299 271623

Mob: 07826 929222

liz@lifelifeathome.co.uk

Other support services available on request.

www.lifelifeathome.co.uk

Contact Tracey

Tel: 01299 211660

Mob: 07957 659909

tracey@lifelifeathome.co.uk



BAGGINSWOOD

Bagginswood, Clebury Mortimer,
Nr. Kidderminster, Worcs. DY14 8NB

Telephone: 01746 718732

Heath Farm Meats, Bagginswood

Opening Hours

Wed 8am to 5.30pm, Thurs 8am to 7pm, Fri 8am to 5.30pm, Sat 8am to 12.30pm

Straight from Our Farm to Table

We rear & sell all our own beef, pork, lamb & mutton through our shop on farm.

We also make our own flavoured sausages, burgers, home cured bacon,

gammon etc. No order to large or small.

Hams ● All Poultry ● Honey ● Mawley Milk & Cream ● Ashley's Cakes & Bread ●

Jams ● Eggs ● Cheeses ● Apple Juice ● Potatoes ● Meat Pies ● Sticks & Logs

Telephone 01746 718732 with your order to arrange a date & time for collection



Electrical & Security

Tel: 07973 112463 (Anytime)

01299 489223



- Full/ Part Installations
- Existing System Updates
- Alarm & Security Systems
- PAT Testing
- Domestic and Commercial Properties
- Electrical Problems
- Landlords & Electrical Safety Certification
- Upgrades
- Free Callouts and Quotes
- For Existing and New Installations and Security.
- Part P + Full Scope Registration
- Card Payments Accepted



Fast Friendly Service, No Job Too Small



FOR ALL YOUR ACCOUNTANCY REQUIREMENTS

www.fairway-accountants.co.uk

Head Office: 01299 822283
team@fairway-net.co.uk

Simon Hector: 07896 439594
sjh@fairway-net.co.uk



Philip Dunne's Letter from Westminster

Since the full-scale invasion of Ukraine by Russia, it has been uplifting to see people around the world uniting to do all they can to help those affected by the conflict.

The UK is a particularly charitable country, and people in Shropshire always go above and beyond when it comes to helping those in need. We saw this in spades during the covid pandemic, where community groups and friendly neighbours helped each other cope. This was especially important for those of us who had to shield, or were not able to get out for basic supplies and prescriptions.

There is also always a strong response from local communities whenever disaster appeals are organised through the major charities, which are so active in Shropshire. But the reality of renewed war in Europe following the devastation wreaked on the innocent people has awakened a tremendous public spirit to try to help.

Most of us thought war in Europe had been consigned to history. Hardly anyone under the age of 75 has had experience of it, aside from those who served in the Balkan conflicts, and following the fall of the Berlin Wall at the end of the Cold War we did not expect nations would invade democratic neighbours in Europe.

I have been moved by the outpouring of warmth and desire to help people in Ukraine and refugees escaping the horror. Many of our communities have held fund raising events, donated money, medicine, food, and others have collected clothing and other consumables, which are waiting for the all-clear to send them. At the time of writing,

the Disasters Emergency Committee appeal in response to the crisis has helped raise over £150m, of which the government is providing £25m of match funding as part of its £400m . The displacement of people from their homes has been horrific to see, made all worse by Putin's decision to use indiscriminate destruction in cities, with innocent civilians paying the price.

Since the first days of this renewed conflict I have called on the government to introduce a flexible approach to refugees, and to provide support to neighbouring countries, as the first point to which refugees will seek to flee.

Many constituents have offered to provide accommodation for refugees and their families, and I am pleased the government has put in place a specific Homes for Ukrainians Scheme, to allow anyone who can provide assistance to do so if they wish. I joined 100,000 others within the first day of the scheme opening to sign up to provide sponsorship. People arriving under this scheme will be able to live and work in the UK for up to three years, and will be able to access healthcare, benefits, employment support, education, and English language tuition.

I was in the House of Commons chamber last month when President Zelensky became the first non-Parliamentarian ever to give an address to the House of Commons. All MPs, Peers and journalists present stood united across party lines to show our support to him and the people of Ukraine.



COACH HOLIDAYS & DAY TRIPS

Discover your next holiday by coach! Book with Whittles Coaches, established for over 95 years and based in Kidderminster. Whittles Holidays include:

- ✓ Home Pick Up & Return Service from your Door!
- ✓ Comfortable & Relaxing Coach Travel
- ✓ Be Looked after from Start to Finish by our Drivers
- ✓ High Standard Hotels with Good Food
- ✓ Included Sightseeing Excursions
- ✓ Afternoon Tea on Outward Journey
- ✓ Portage of your Luggage

LOW DEPOSITS - BOOK FOR ONLY £50 PER PERSON!

CALL 0845 485 2434 FOR YOUR FREE BROCHURE | WWW.WHITTLECOACH.CO.UK

Do you suffer from heat loss, outside noise or draughty windows like many older properties?

**Bespoke
Secondary
Glazing**

Secondary glazing from Lansec greatly reduces draughts and heat loss while retaining the traditional appearance of your original windows

- **Recommended** by Historic England for heritage and Grade 2 listed buildings
- **Barely visible** from inside or outside
- **Colour matched** to your existing windows
- **10 year** material and labour guarantee
- **Local**, family run business



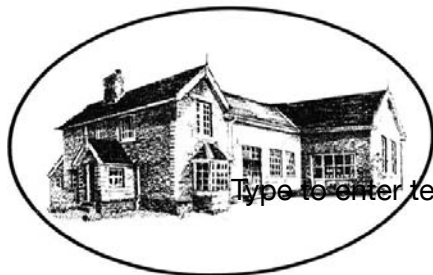
01299 544013
lansecglz.co.uk

Unit 4 Blackmanstitch, Long Bank, Bewdley, Worcs DY12 2QW



Bayton Church of England Primary School

- Be the best you can be, as a child of God -



www.baytonceprimary.co.uk
01299 832393
office@baytonpri.worcs.sch.uk

Call or email to book an appointment to visit our school and meet our staff.

"We offer an alternative and unique Primary School experience, in an idyllic rural setting. A small family-orientated school with a caring ethos and traditional values, coupled with excellent results. If you want the very best for your child, come and visit us."

*Ms. Jolanda Simmonds
Head Teacher*

**Spaces currently in Years 4, 5 & 6, and we are also welcoming Parents & Carers of September 2019 intake.
Governor vacancies – please call for information**

Rated "Outstanding" in our latest SIAMs inspection (March 2018).

Friendship – Hope – Perseverance – Compassion – Trust – Forgiveness – Responsibility – Respect – Truthfulness

Our school vision: We aim for everyone to be a part of our community, be life-long learners who are confident, enthusiastic, valued and reach their God given full potential.



CLEOBURY W.I.

Our Annual General meeting was far from dry and dusty, as we began by celebrating 100 years of the Women's Institute in Cleobury Mortimer and International Women's Day with a rousing rendition of the WI anthem 'Jerusalem'.

Following successful Winter Warmer fundraising lunches, for which we thank members and customers, the Treasurer reported that we have a sizeable cheque for the annual charity, the local branch of the British Legion. In 2022/2023 we will be supporting the Air Ambulance. After a thank you to retiring committee members and welcome to new ones we enjoyed a buffet followed by a noisy, retro, beetle drive!

Since then we have shared coffee and chat at the Larch Barn and started to plan the centenary garden. On April 12th, 7.30pm in the Market Hall, we will be having a go at quilting.

The centenary programme, 2022/23 is now available to members. The annual subscription of just £30 entitles membership not only to Cleobury Mortimer WI but also the largest women's voluntary organisation in the UK with over 220,000 members in 6,300

WIs. To join us please contact Clare 01299 271905 or Judy 01299 270983 or email judysant10@gmail.com and you will be made very welcome. *Judy Sant*

COCO MINIBUS

Just a reminder that Co-Co has set up a mini-bus service to take people to and from the twice-monthly Wednesday coffee mornings at the Market Hall in Cleobury. The bus will be able to accommodate wheelchairs, but not mobility scooters, and will pick up people from their own homes and take them back again. The cost includes coffee/tea and cake at just £5 for those living outside Cleobury Mortimer and £4 for those who live in the town. They started on March 9th. The route taken depends on where potential service users live, however it is envisaged that it could serve local areas such as Doddington, Earls Ditton, Hopton Wafers, Mamble, Clows Top, Bayton, Neen Savage, Kinlet, Farlow and Oretton. If you are interested in this service, please send an email to giulia.johnson@yahoo.com, marked "Co-Co Minibus", giving your address and phone number, alternatively phone

01299 270647 and leave a message. Co-Co will then get in touch to let you have further details. *Catherine Evans*

CLOWS TOP

VICTORY HALL

We had a Jumble Sale on March 19th, the day before the Hall was used for the half way break for all those who were taking part in the Mad March Hare cycle ride.

Storm Eunice caused postponement of the concert by Bill Lennon; it will now take place on April 9th with door opening at 7.00; tickets available at £5 each.

Replacement of the roof will take place in April; activities will be suspended. Table Top Sale between 10.00 and 12 noon on April 30th

The Annual General Meeting will take place at 7.30pm on May 16th at the Hall, a chance to view the new roof and hear plans for future events. Nominations for new Committee members are being sought and should be forwarded to the Committee via the CTVH Mobile or by email. For details of how to book the Hall, please ring the CTVH Mobile 07379 959895, or visit Clows Top Victory Hall Facebook page *Nigel Caldicott*

No.19
The Beauty Room
with Jane Weaver



Wash away the aches, pains and stress of everyday life by indulging in a relaxing Swedish massage, any combination of back, shoulder, neck, arms and legs, ½, ¾, 1 or 1½ hrs, or treat yourself to a manicure/pedicure, waxing or tinting.

Telephone consultations available to discuss any personal requirements, treatments available at No.19 or in your own home. Contact Jane on 07968 882269 or email 19thebeautyroom@gmail.com

Just like the lotus flower we too have the ability to rise from the mud, bloom out of the darkness and radiate into the world!



Soft furnishing and
Interior Design Services



Masquerade
Fabrics Limited

01299 271 680
36 High Street Cleobury Mortimer near Kidderminster
Worcestershire DY14 8DQ

Retailers for Sanderson, Harlequin, Monkwell
Crowson and many more...

Comprehensive design, measuring and fitting service.

Jubilee Afternoon Tea

Cleobury Mortimer Festival Celebrations

Sunday 5th June at 2:00pm

Lacon Childe School



We are celebrating the Queens Platinum Jubilee
with a community Afternoon Tea event.

This is a limited Ticket event with proceeds going to Charity

All of this for only £5 per person

Our team of Ladies will serve Tea, Cakes and Scones
using traditional and vintage crockery.

Included in your ticket is a free raffle ticket.

***We look forward
to seeing you there***

Book your tickets by **May 15th** by calling

07824366443

or email **festivalcleobury@gmail.com**



Brought to you by the
Festival Volunteers Group
supported by





The Lamp Restaurant

15a High Street, Cleobury Mortimer, Shropshire, DY14 8DG

01299 272785 or 01299 271313

Fully Licenced and Air Conditioned

Serving Bangladeshi & Indian Cuisine



The Lamp Restaurant winner of Currylife award chef of the Year

Open 7days a week from 6.00pm until 11.00pm

The Lamp's cuisine, inspired by Sylhet, the second city of Bangladesh, offers a wide variety of choice along with established favourite dishes and a selection of Chef's Specials.

The wide variety of starters and accompaniments chosen by our chef to complement your main course.

Takeaway service offers free delivery up to 3miles for orders over £15.00.

Find us on Facebook: Lamp Inn Cleobury Mortimer



Michael Coombes Roofing & Building Maintenance.

Complete Re-roofing, Roof repairs, Pointing & Chimney repairs.

Slabbing & Brick work

Wall & Floor Tiling

Painting & Decorating

Over 20 Years experience in the Cleobury area.

Call Michael on 07854 047413

APSupplies

- ◆ Specialists in equestrian and field maintenance
- ◆ Haylage, hay and straw supplied
- ◆ From chain harrowing to mowing and baling
- ◆ Fencing to ménage maintenance
- ◆ Woodland management and coppicing
- ◆ Concrete pads and sheds all at competitive rates

APSupplies.....Call today for a chat !



Ant Harman: 07779239393



TURNERS GATES

bespoke sizes at standard prices



A small family run business specialising in quality wooden gates to suit all entrances.

Visit our website: www.turnersgates.co.uk

Drop us an email: turnersgates@outlook.com

Or give us a call on: 01299 270 965



Andrew Jordan (Jordy)
JRD.GROUNDWORK@GMAIL.COM

Moors View
Moors Lane, Oreton,
Kidderminster, Worcestershire
DY14 8RH



AVAILABLE SERVICES

- Foundation & footings
- Concreting
- Driveways
- Ditching
- Drainage
- Landscaping
- General Building
- Fencing
- Hedgecutting
- Digger Hire
- All Jobs Undertaken

TIME TO CLEAN YOUR OVEN? LET US DO THE JOB YOU HATE

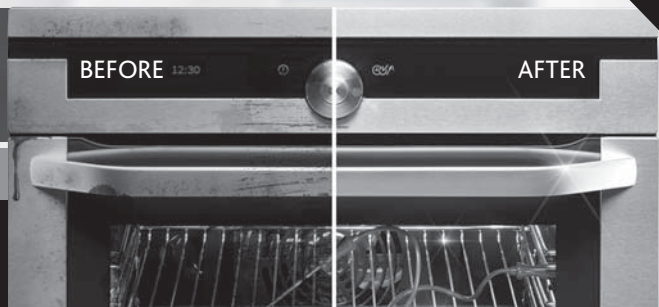
AS SEEN
ON TV

- Ovens
- Grills
- Extractors
- Filters
- BBQs
- Microwaves
- Hobs
- Ranges
- AGAs

Call or go online today for your free estimate



07913 123543
ovenclean.com



A GUIDE TO SHROPSHIRE'S CHURCHES

It's beginning to feel that things might be getting easier although it's still safer to be sensible. Many of us are wearing masks less frequently and even daring to go out a bit more. Perhaps we have reached the point when we can have a "normal" day out. And you do not have too go far.

Shropshire Churches Tourism Group have just produced a new, 32-page booklet featuring 100 of the best and most welcoming churches in the county. Each church included is unique with some dating back a thousand years and more. You will find evidence of Saxon stone work in places like Barrow, the oldest church in the County; Diddlebury has herringbone stonework in its north wall; at Stanton Lacy look at the exterior walls of the building.

Others of the 100 may be younger but still have a lot to show off. The yew tree in Hope Bagot churchyard is about 1600 years old, so began growing around 400AD – that's old. The sandstone church at Bromfield is a fascinating site, originally with a monastery, but quickly became a Parish Church, with lots to see. Building started in Culmington in the early 1300s but was not finished until the spire was completed in 1967!

The front cover of the new brochure features the east window of Whitton church, designed by Pre-Raphaelite artist, Edward Burne Jones, and there are more windows in several other of our churches. Read the brochure and you could go on a "hunt the stained glass window" outing! Talking of Pre-Raphaelites, you could be

stunned by the interior of Jackfield church as these artists were big on tiles too.

In the middle of the county, you could visit the Greek Orthodox Church on the edge of Shrewsbury or go to one of the oldest Unitarian Churches in the country, in Shrewsbury High Street. Augustus Pugin designed the Houses of Parliament but he also designed the Roman Catholic Cathedral in Shrewsbury.

In the north of the county, Whitchurch, which traces its origins back to Roman times, is home to Shropshire's first grand classical church built in 1713. In Oswestry church you can still see evidence of damage from the Civil War of the 1640s. Moreton Corbet is strangely only the Church and a ruined castle but both worth a visit.

You should find the new guide in churches in your area which are members of Shropshire Churches Tourism Group, the picture showing you what you are looking for! You can view it online www.discover-shropshirechurches.co.uk or pick it up in Tourist Information Centres or some major tourist sites. Make the most of it and this year get to know even more about Shropshire.

*Anni Holden Calver, CfGA trustee & member of The Churchyard Task Team
Secretary of Shropshire Churches Tourism Group*

*The member churches locally are:
Caynham, Doddington, Highley, Kinlet
and Stottesdon.*

Anni



Remember to follow us

Doddington Lodge Post



DUCKLINGS ARRIVE AT DODDINGTON LODGE

Our very special new residents from Incredible Eggs hatched on St Patrick's Day. Introducing, Delilah, Stewie, Penelope and Doddi. Their names were all chosen by the residents and team members. They are definitely enjoying their new home here at Doddington Lodge and have made a real impression with our residents. We will keep you posted with their progress.



St Patrick's Day

Everyone had such a great day celebrating St Patrick's Day. Residents & the Doddington Lodge Team really got into the Luck of the Irish spirit. For lunch we enjoyed Irish Toad in the Hole with Mustard Champ & St Patrick's Day Cream Rice Pudding.



SUMMER FETE

On Saturday 23rd July 2022 we will be hosting our annual Summer Fete. We are calling all stall holders, entertainers and face painters who would like to come and join us and to be a part of this wonderful community day of celebrations.

To find out more or to confirm you would like to book please contact: reception@doddingtonlodge.com

www.doddingtonlodge.com | E: enquiries@doddingtonlodge.com | T: 01584 707084



DODDINGTON LODGE WELL-BEING ACTIVITIES



Rachel, our Activities Co-ordinator always has lots of lovely things planned each day for our Residents to enjoy. Games, reading, baking and arts & crafts. Taking walks in our lovely gardens in the fresh countryside air. Every day is different, we make sure there is something for everyone to get involved

with and enjoy time with the Doddington Lodge activities team. This month we have celebrated National Science Week, Red Nose Day, St Patrick's Day, World Poem Day and International Women's Day. We've also enjoyed cinema nights, with popcorn & ice-cream.



★ TEAM SPOTLIGHT ★

Stacey Gwinnett has worked at Doddington Lodge as a Domestic Co-ordinator since June 2021 she has worked in Care Homes for 16 years so is quite an expert. Stacey is, by her own admission, passionate about cleaning, which is perfect for us here at Doddington.

Stacey finally got married to Rob in July last year having postponed her wedding twice due to Covid restrictions. They have a 3 year old daughter and live in Tenbury Wells. Stacey is a real asset to Doddington Lodge, she is cheerful, happy and helpful all of the time and always has a lovely smile. When asked what she enjoys about working at Doddington, Stacey said 'everything'! She enjoys being part of the Doddington Family and really loves the time that she gets to spend with the residents. We are very lucky to have her!

www.doddingtonlodge.com | E: enquiries@doddingtonlodge.com | T: 01584 707084



A small local business.

I am a qualified lawyer with over 30 years experience offering a personal and approachable service.

I undertake specialist will drafting, lasting powers of attorney, deputyship applications and probate.

"I've used Mandy at Westons Wills and Probate numerous times over recent years covering all aspects of her expertise. Her guidance on the way forward and solutions to issues that she has suggested has been excellent. She is extremely communicative and responsive, and handles difficult situations with compassion and empathy. I have happily and confidently recommended her services to everyone I know that would benefit from her services."

"Mandy Weston of Westons Wills and Probate is a very professional and knowledgeable person. She has now become my 'go to' legal adviser and has taken on many legal tasks for me and my family. Wills, Probate, Inheritance Tax and Powers of Attorney. I trust her judgement and experience to act in mine and my family's best interest. I would highly recommend her legal services to anyone."



Contact me today

"Great expertise and a friendly professional manner"



Contact Mandy Weston Phone 01299 405873 Mobile 07931 411733

Email mandy@westonswillsandprobate.co.uk **Website** www.westonswillsandprobate.co.uk

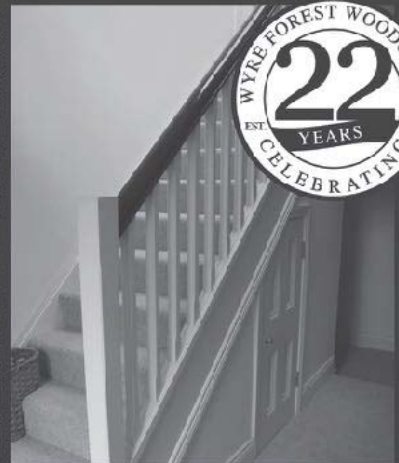
Address The Old Snuff Mill Warehouse, Park Lane, Bewdley, Worcestershire DY12 2EL



**WYRE FOREST
WOODCRAFT**
purpose made joinery

**Specialists in the Manufacture
of Purpose Made Joinery**

- Tailor Made Timber Windows
- Traditional and Contemporary Style Timber Doors
- Custom Made Staircases
- Bespoke Conservatories
- Made to Measure Gates




TO SEE EXAMPLES OF OUR FULLY FACTORY FINISHED JOINERY VISIT OUR WORKSHOPS AND SHOWROOM

www.wyreforestwoodcraft.co.uk

01562 68100 | enquiry@wyreforestwoodcraft.co.uk

Oldington Lane | Firs Ind Est | Kidderminster | Worcestershire | DY11 7QN

IRENA S.A.C DIP. (DIST). N.C.F.E. M.C.F.H.P.
FOOT HEALTH CARE PRACTITIONER




All your foot problems dealt with:-

- Foot health check • Verrucas etc.
- Corns • Medical Manicure
- Callus • Medical Pedicure

Free vascular Doppler Check of your feet

The Old Farmhouse
Button Bridge, nr Bewdley
DY12 3AW



Mobile visits available
01299 841 277
hessins@gmail.com

Paul Harding  **Tree Services**

- Tree surgery and felling
- Woodland thinning & maintenance
- Hedge trimming & grass cutting
- Supplier of hardwood logs, kindling and garden bark

•NPTC certified fully insured. Domestic and commercial work undertaken.
Tel 01584 890 993 Mob 07970 878 224

Hollywaste Holiday Lets

Our 2 bedroom (ensuite) cottage, sleeps up to 6 adults, situated in Hollywaste, Cleobury Mortimer. Fully equipped kitchen, open plan living room with log burner, dining area and downstairs WC. Includes Freesat and fast WiFi. There are enclosed & open decking areas outside, to take advantage of the beautiful countryside views, and a grassed area for outdoor games. Open all year round and welcomes adults, children, 1 large dog or up to 2 small dogs

Discount of 10% available for locals simply quote "keepitlocal" at the checkout

Events we can accommodate:
Staycations, Pamper weekends, Shooting weekends, Wedding venue, Minimoon stays, Stargazing weekends, Cookery weekends & events, Camping and caravan pitches are also available!
If you're interested in hiring our space or land for any event and time frame.

Tel: 07962 151322 Email: hollywasteholidaylets@gmail.com FB: <https://www.facebook.com/HollywasteHolidayCottage>
Website: <https://hollywasteholidaylets.squarespace.com> for more information

 **Kingfisher Crafts**
Sally Serrell-Cooke
07890 721657 | kingfishercrafts299@gmail.com
Visit me on Etsy and Instagram: **KingfisherCrafts299**



New Baby Hampers (Travel Changing Mat, Bibs, Nursing Towels, Quillow) *
Placemat Sets * Wine Gift Bags *
Cafetiere Jackets * Festive Gifts



CARDS, GIFTS, HOMEWARE, HARDWARE AND EVERYDAY ESSENTIALS!

Friendly Staff, and a great range of stock with prices to match!

If you need it, and you want it! We've probably got it!

Pop inside before you pop online!

18 High Street, Cleobury Mortimer

Tel: 01299 489590

Email: cleoburrs.onthehighstreet@gmail.com

Like our Facebook page CLEOBURRS

Keep up to date with the latest products!

BARN STORED LOGS FOR SALE

**Delivered within ten miles
of Cleobury Mortimer
Longer journeys £10**

**PLEASE CALL
0781 366 8353 or
01584 781421**

Rachel Siddall

DipCFHP, MPSPract

Footcare in the privacy of your own

home:

Nail trimming
Ingrowing toenails
Corn removal
Thickening nails
Callus reduction
Verruca treatment
Diabetic foot care



07478 007913



Hobbs Building Services

EST 25Years.

A Total Plastering, Maintenance and Building Service for your home,
business and outbuildings.
Insurance work undertaken

Emergency call out service for general plumbing, roofing, boarding up damaged doors and
windows. For a free quote please call;

Ian on; 07967190742

Email: hobbsbuildingservice@yahoo.co.uk Or Call/Text Kelly on; 07790085307

THE CURLEWS RETURN

Spring is on its way and Curlews are returning to the Curlew Country area. After concern that recent storms might affect return migration, reported sightings of the first birds of the season only a little later than usual have been welcomed with a sigh of relief by Curlew Country staff. Curlews are Britain's largest wader, a migratory species facing sharp declines due to mounting environmental pressures and ever-growing predator levels. Britain holds around 25% of the world population of the breeding Eurasian Curlew, and since 2017 Curlew Country has been dedicated to saving this important species from local extinction.



Juvenile Curlew photo courtesy of A Bicheno

2022 sees Curlew Country set to continue its recovery work through another season in Shropshire and the Welsh borders, resuming

its efforts to try and reverse their decline. Farmer support and predator control are vital to saving Curlews and offer benefits to many other species as well. Whilst waiting for larger policy changes and new environmental land management schemes, Curlew Country has been headstarting to try and prevent the local population disappearing.

Headstarting, taking eggs from wild nests under licence and incubating them artificially, is a temporary measure to help boost a population. The resulting chicks are then reared in captivity until they are able to fly strongly, at which point they are released back into the wild giving them a better chance of survival. Since starting this valuable work Curlew Country have released over 90 fully fledged chicks, and preparations are already underway to make 2022 another successful headstarting year.

Learn more about these fantastic birds, while helping secure their future, by joining Curlew Country on April 21st (World Curlew Day) to raise money for Britain's largest wader. The 13 mile Curlew Country Circuit around the Shropshire Hills, with a shorter route for families, will take in beautiful scenery and Curlew hotspots while raising funds for the continuation of Curlew Country's vital recovery work. To find out more and book your place visit www.curlewcountry.org

Polly Owen



**THE CLEOBURY
COUNTRY CENTRE**

Contacting us:

t: 01299 272 300

e: business@cleoburycountry.com

www.cleoburycountrycentre.com

Upcoming Training Courses:

Fire Marshal—£70 +VAT—28.04.22

Food Hygiene L2—£70+VAT—07.06.22

EFAW—£75+VAT—21.06.22

EFAW/Peadiatric FA—£150+VAT—28,29/06/22

Cleobury Country Farmers Market

Saturday 16th April 2022

Cleobury Opticians

NHS & private eye tests ♦ FREE children's glasses

FREE NHS glasses ♦ Home visits



Opening Times-	
Tuesday	9am-1pm 2pm-5pm
Wednesday	9am-1pm 2pm-5pm
Thursday	9am-1pm 2pm-5pm
Friday	10am-2pm
Saturday	9am-1pm

www.cleoburopticians.co.uk

16 Church Street, Cleobury Mortimer, Kidderminster
DY14 8BX

Tel: 01299 270012

Email: cleoburopticians@outlook.com



All Aspects of carpentry work undertaken

Level 3 City & Guilds in Carpentry & Joinery, 20 years of experience

Tel: 07854 032750

Email: duncpearce1@gmail.com

Stewart Mumford Architectural Services Bespoke Architecture

Great value personal service backed up with extensive local knowledge, established links with other construction professionals to ensure comprehensive packages specifically tailored to individual needs.

Initial consultation free of charge.

Specialist in Works to Listed Buildings, Affordable Houses, Open Market Houses, House Extension and Alteration, Barn Conversion and Commercial Projects.



T: 01299 271068

M: 07977 921039

E: office@stewartmumford.co.uk



**Cleobury Mortimer Benefice
Church services throughout the Benefice in April**

**EASTER DAY SERVICES
THROUGHOUT CLEOBURY BENEFICE
SUNDAY 17th APRIL 2022**

Happy Easter

St Mary's, Cleobury Mortimer 10.00am
St Michael and All Angels', Hopton Wafers 9.30am
St John the Baptist, Doddington 11.00am
All Saints', Neen Sollars 11.00am
St George's, Milson 10.00am
St Mary's, Neen Savage 10.00am
St John the Baptist, Kinlet 11.15am

St Mary's Cleobury Mortimer

Sunday 3rd April – 10am Eucharist
Sunday 10th April – 8.30am and 10am Eucharist
Sunday 17th April – 10am Easter Service Eucharist
Sunday 24th April - 10am Eucharist

St Michael and All Angels', Hopton Wafers

Sunday 3rd April - 9.30am Eucharist
Sunday 17th April - 9.30am Eucharist

St John the Baptist, Doddington

Sunday 3rd April – 11.00am Eucharist
Sunday 17th April – 11.00am Eucharist

All Saints', Neen Sollars

Sunday 3rd April – 11.am Village Worship
Sunday 10th April– 11.am Eucharist
Sunday 17th April– 11.am Easter Service
Sunday 24th April Saturday Village Worship

St George's, Milson

Sunday 3rd April – 6.00pm Evening Prayer
Sunday 17th April – 10.00am Easter Service Eucharist

St Mary's, Neen Savage

Sunday 3rd April – 6pm Evening Prayer BCP
Sunday 10th April – 6pm Evening Prayer BCP
Sunday 17th April – 10.00am Easter Service Eucharist BCP

St John the Baptist, Kinlet

Sunday 10th April – 11.15am Eucharist BCP
Sunday 17th April – 11.15 Easter Service Eucharist BCP
Sunday 24th April – 6.00pm Evening Prayer BCP

DROP IN AT ST. MARY'S

With St.Mary's Pastoral Care Group, every Thursday: 10.00 am – 11.30 am
Drop in for a free cup of coffee/tea and biscuit with the chance to have a chat and share problems.

UKRAINE: Thinking of hosting refugees?

Are you here from Ukraine and want to meet up with others? Please join us.

Access to support and advice if needed.



The Church Office is open Tuesday and Thursday from 9.00am-3.00pm
Contact details: Grace Johnson cleoburychurch@hotmail.com
Tel: 01299 272916

Bespoke framing and mounting for:

- Artwork
- Photographs
- Canvases



The Framing Studio Cleobury Mortimer

Paul Serrell-Cooke
07791 378240

Bringing artwork and images to life



Quality firewood for sale



£190 for 2 cubic metres of barn stored ash firewood delivered to your driveway.

We source our wood from a reputable and sustainable source.

Can do multiple loads at a discounted rate.

Can deliver up to 20 mile radius from Bayton (DY14 9NA).

Call John Edwards 07531025018



H.C.P.C Number CH22527

Cleobury Chiropody Janet Manley

Qualified Chiropodist
MSSCh. MBChA
BSYA (reflex) REIKI Master

Tele:- 01299-272841

Mob:- 07805-268439

Email: janetpmanley@yahoo.co.uk

2, Tenbury Road,
Cleobury Mortimer,
Kidderminster,
Worcs.
DY14 8RB

A Round Of Appaws

Professional Dog Groomer
C&G Levels 2 & 3 Diploma

Fully Insured

Call or text Jules on
07368359144

aroundofappaws1@gmail.com



A. Farr Painting & Decorating

Give your home a beautiful new look....

Contact:

andyfarr12345@gmail.com 07815 855340

Cuitar Lessons

With an experienced local tutor
Teaching for 26 years privately and in schools
Exams available. DBS certificate
All ages, styles and abilities welcome
Contact Mark for more information @
MARK.CHECKLEY@sky.com
01746 718636 - 07708 386433

Simon Morton in the Garden.

The Bloggers Guide to Garden Inspiration

There's something in the air...

Daffs bounce around in the wind, and lush tulip leaves are muscling their way to the surface in beds, pots and hedgerows across Cleobury. What a time to be alive! Spring is on its way.

Spring tends to have a strange effect on us gardeners. We emerge from the winter hibernation and immediately want to get to work, tweaking and titivating our little patch of earth to make it even more special.

But where do you turn for your next great idea? Rest easy, dear reader, this is not my first rodeo - allow me to share the pros and cons of various gardening inspiration sources:

Magazines

Countless options to choose from depending on the size of garden, budget and your particular style.

Pros: Easy access to a remarkable variety of garden styles and ideas, all from the comfort of your armchair.

Cons: Feelings of inadequacy (remember these gardens have been primped and primed within an inch of their lives. No-one's garden is *that* fancy).

Visiting Gardens

Schemes like the brilliant National Open Garden (AKA 'The Yellow Book') give access to real gardens local to you.

Pros: A chance to chat with friendly folk who have been there and got the tea towel, plants on sale for a fraction of the cost you'd pay in a garden centre and (importantly) a very good chance of a decent cuppa and slice of cake.

Cons: Calories. Lots of them.

The Internet

The web is for more than sharing cat videos and settling pub arguments (just how many times was Elizabeth Taylor married?). Dig deeper (excuse the pun), and you'll find countless blogs, websites and discussion boards dedicated to the art of gardening.

Pros: Travel the horticultural world while simultaneously tucking into a nice brew and hobnob.

Cons: The 'Buy Now' button next to many articles. Financial ruin is just a few clicks away.

Garden Shows

The lovely RHS Malvern Show is the big one locally, but there are plenty to choose from.

Pros: Big name experts on hand to answer any question (the more of a novice you are, the bigger the welcome), wild and wacky 'show gardens' and, based on my research, generally accompanied with a very decent beer tent.

Cons: Shins and ankles knocked to buggery by old people mindlessly dragging wheeled plastic baskets full of plants behind them. Avoid the main Plant Theatre at peak times for fear of living the rest of your life with a limp.

In short, there is garden inspiration everywhere (we've not even touched on the plethora of TV shows - it may depend on whether you're a Monty fan or not - he's more 'marmite' than you'd think). Whatever you do, I'd recommend enjoying the journey as much as the destination. The planning and research is a tonic, especially when it's blowing a gale outside, so don't rush to pick up the spade (or start up the cement mixer).

Happy planning and planting!

More Clarion Smalls

GUTTER CLEANING SERVICE

No ladders or scaffolding needed.
Can reach any awkward place.

All residential and commercial

Competitive rates

Call Ian on 07870384096

HIS & HERS

Dog Grooming Parlour

All breeds and
Cross breeds professionally
Trimmed and Groomed



J. A. Guest

Tel: 07790 796 027

PAUL LYNCH PLASTERING SERVICES

Recently relocated. Offering all aspects of plastering including making and repairing mouldings, cornices, etc. Fully insured, references available.

07890 049 592

or

01299 272931

Washing Machine
Repairs and Sales

JULIAN BREAKWELL

Telephone 07791 633 746

Repairs to all makes, including
Bosch, Hoover, Zanussi and
Hotpoint

**NO CALL OUT CHARGE
FIXED LABOUR COST**

Ever After

- Breakfast club
- After school club
- Holiday club
- "Forest schools" outings
- 15hrs education funding
- 24U funding
- Age ranges: 3 months to 11 years



Day Nursery
Cleobury Mortimer

Please contact us on 01299 272 777
Or Call in to see us anytime.

Friendly, Caring Environment for the Community

Hi everyone, don't forget that we are still collecting soft toys and teddies to be sent to the less fortunate.

So drop them off in Market Hall please.

Many thanks for your help.

Collections4charities.com 07976307889

Piano tutor

Francis Engleheart

*All ages — I specialise in teaching adults
without previous experience*

I come to you

07710 288526 • fengleheart@hotmail.com

S. L. CARTER

**PROFESSIONAL PAINTER AND
DECORATOR**

**PLASTERING, TILING, COVING AND
GLAZING**

CLEOBURY MORTIMER

TEL: 01299 272868

MOBILE: 07815 483 029

THE READING GROUP

'Keeping Mum' by Brian Thompson, a rather bleak tale of childhood in 1940 and 50's, though told without self pity. Most enjoyed it as it was a story of survival and achievement. A good piece of social history, amusing at times. It flowed quite well although one comment was, read with more determination than enthusiasm, whilst another said it just wasn't a book for them. Our next book, 'The Eyre Affair' by Jasper Fforde, looks very different. We will read it this month and share our findings on Tuesday April 19th, a day late due to Easter.

Deana Kimber
01299 271754

THE ROYAL BRITISH LEGION

The Branch is getting back to normal. We have been holding our monthly meetings since December and had a successful annual lunch on 20th March. Numbers were down a little but the meal went well. Our planned speaker, Sarah Kerr the Armed Forces Outreach Support Officer, was unable to

join us so one of our members, Clare Hadwell, gave us a talk on Service Children's education. We are starting to look at outings and have a number in mind, although at present it is difficult to get a proper idea of the total cost per head as the price of fuel is rather volatile.

For the ex-service community in the area come along to the Community Hub on Tuesdays 1030 -1200. I am there every week. In addition, look out for the Armed Forces Outreach which we have started holding at the Hub. The next one is planned for April 5th, 1330 to 1530.

Falkland veterans, South Atlantic Medal veterans, bereaved family members and civilians who supported the Task Force are invited to attend an event at the National memorial Arboretum on June 14th to mark 40 years since the end of the conflict. Details are on the RBL website ([Falklands 40 | Remembrance | Royal British Legion](http://www.falklandscotland.co.uk)).

You can find out more about the Royal British Legion at <http://www.britishlegion.org.uk> and

you can contact me on 01299 271384 or 07973 699829

Mike Hermolle
Branch Chairman

C M BINGO CLUB

Organiser Suzanne France tells us the club is growing week on week, which is a good sign. It meets at the Market Hall on Mondays, doors open at 7.00 and at 8.00 it's "Eyes Down" time. The nominated charity for any funds raised is the Cleobury Scouts group.

Suzanne can tell you more. She's on CM 2870003 or email suzannefrance@gmail.com

THE MEN'S SHED

Until the Shed opens later this year, there's a temporary deal for members and anyone interested to meet on Fridays at the Cleobury Hub in Church Street. At this early stage the idea is an informal gathering from 2.30 until about 4.00 and you can get a decent coffee to add to the occasion. A good chance for possible members to hear just how good the range of tools available and guidance in their use will be. Provisional opening date for the shed will be the weekend of the Town Fair, June 4th/5th.

Are you buying your first home, moving home or looking to remortgage?

- I personally manage the entire process ensuring you get the perfect mortgage
- I compare, advise and arrange mortgages from the entire market
- I liaise with lenders, solicitors and estate agents to ensure a smooth process
 - **100% free** - I never charge a fee for my mortgage services
 - Access to highly competitive **life insurance** policies
- I am also a qualified **Will Writer** so contact me to have your Will written

Call me now to find out what you can borrow and your next steps

YOUR HOME MAY BE REPOSSESSED IF YOU DO NOT KEEP UP REPAYMENTS ON YOUR MORTGAGE

01299 549 820 | Stephanie@midasfp.com | www.midasfp.co.uk
Midas Financial Planning Services Ltd is authorised and Regulated by the Financial Conduct Authority



I'm Stephanie
01299
549 820

NEWSPAPER DELIVERIES



Monday- Saturday

Covers Cleobury Mortimer and Clee Hill

Contact Laura Callwood on 07495 708404

or lauracallwood@outlook.com

WILMAS CLEANING & IRONING SERVICES

Experienced cleaner, very trustworthy and reliable. If you would like your ironing done you can drop to my house. I am available weekdays, and weekend's times/days flexible. References are available upon request.



Please contact me for further details on

07891416477
01299 272 941



Number Nineteen

No.19 Denture Repairs

Dental Laboratory

SPEEDY, QUALITY DENTURE REPAIRS

Cracked/broken dentures repaired the same day.

A 1 HOUR service is available for when time is of the essence, just call to make an appointment .

19 Lower Street, Cleobury Mortimer, DY14 8AL

Email: nevilleweaver@googlemail.com

Phone: 07973856733

All work undertaken by a GDC registered technician



A.B. Plastering
Plus Traditional Lime Plastering

Adrian Booton
PLASTERER

4 Severne Green, Bayton
Nr Kidderminster, DY14 9LL

Tel: 01299 832 838
Mobile: 07974 582 524



TOTAL PROPERTY MAINTENANCE

Fireplaces built for multi-fuel burning stoves,
Plastering, Building & General Maintenance

Rob Taylor

Mobile: 07944 074540

Landline: 01299 832734

Email: rptbuilding@hotmail.co.uk

E.PURSLOW & SON LTD

Stone, Gravel, Cement Supplies

Approved Coal Merchant

Calor Gas Stockists

Tarmacadam Specialists

Car Parks and Driveways

Constructed.

TEL: 01299 270314

David Ward
firewood



Do you need a dependable consistent quality supply of seasoned or kiln dried hardwood and softwood firewood?

Cut and split to suit and delivered in breathable 1.2-cubic metre bags, so no need to restack.

Small delivery vehicle, fitted with crane, can deliver to most locations and situations.

CALL DAVID TO DISCUSS YOUR REQUIREMENTS:

Mobile: 07866 441154

Alan Smith Aerials

Digital TV Installations.

Freeview aerials fitted and distributed around the house.

Freesat box, dish, and cable supplied and fitted. One off payment, **No contract or subscription required.**

Extra points, Repairs, New fits, Set ups, Multi room.

All work is carried out by a **Local**, fully qualified and insured installer.

01299 270007 or 07970 675728

Respect to the people of Ukraine who are battling the forces of the madman Putin. The recent appeal by the Cleobury Community Hub for clothes and medicines was a great success with two vanloads being sent on the first stage of their journey within a few days.

You may be wondering why our Government's response to the Russian invasion of Ukraine has been so slow and feeble, especially in the case of sanctioning of the large number of Russian oligarchs/criminals/respectable businessmen (your choice) based in London. I'm sure it has nothing to do with the £20 million odd in donations that they and their circle have given to the Tory party over the last few years but then I am naïve about these things. Boris boasts that we have the strongest anti money laundering defences in the world. Clearly he should be a stand up comedian – oh sorry, he is. The National Crime Agency tasked with investigating such activities is woefully underfunded with a budget of just £4.5 million. Their staff are underpaid and leaving in some numbers and the oligarchs have any number of aggressive legal firms at their beck and call to challenge any attempt at enforcement. The banks are also complicit with HSBC and Natwest recently paying multi million pound fines for turning a blind eye to the most suspect of transactions. One branch had a customer who paid in £700,000 in cash which arrived in a wheelbarrow (!) but no red flag was raised. As anyone who has tried to open or change a bank account recently will be aware of the hoops that have to be jumped through but then we are not major party donors...

The recent misbehaviour of those in 10 Downing Street appears to be nothing new. In 1776, Tom Paine wrote 'Men who look upon themselves as born to reign, and others to obey, soon grow insolent; selected from the rest of mankind their minds are early poisoned by importance; and the world they act in

differs so materially from the world at large, but they have little opportunity of knowing its true interests, and when they succeed to the government are frequently the most ignorant and unfit of any throughout the dominions'.

What an accurate summing up of the posh boys (and girls) involved. Still, Boris is off the hook regarding 'Partygate' for now due to Vlad having an 'episode'.

More madness in Leicestershire when a pet spaniel became trapped in a badger sett. The Fire and Rescue service were called but relief turned to worry when the owners were told that they risked prosecution and possibly prison if they attempted to dig him out. The Fire Service then spent two days(!) trying to get a badger digging licence until eventually using a high tech listening device which confirmed that there were no badgers in the area. Luckily, the dog survived the ordeal but what a farce...

The state of the Manor House has been mentioned in an article on a heritage website (savebritainsheritage.org). Shropshire Council were contacted for a comment and said that they did not know the condition of the interior and were watching the situation but taking no action (sound familiar?). I dread to think what the state of the place is now. Presumably action will be taken when the place collapses...

When you reach a certain age as I have, you tend to become a little vague about dates. Recently, a friend said she had last seen someone 'the other day'. Turns out it was 15 years ago.

In 2014, the Church of England unveiled a master plan to recruit some 90,000 converts by 2021 which, at a cost of nearly £177 million, would work out at about £834 each. Sadly, only 12,700 have converted which raises the cost to nearly £5,900 per head. Perhaps it might have been better to have reverted to tried and tested methods such as threatening to burn them if they didn't join. This would have been more effective and cheaper...

TRACEY'S KREATIONS

28 High Street, Cleobury Mortimer

FRESH FRUIT AND VEGETABLES DAILY

FREE RANGE EGGS AND LOCAL PRODUCE

FREE DELIVERY

Fruit and Veg Boxes Delivered Daily to Your Door

www.traceyskreations.co.uk

INSTAGRAM

FACEBOOK

Telephone: 01299 270943 / 07376 282444

Email: traceyskreation@gmail.com

Birthday Cards - Anniversary Cards

Special Occasion Cards

Ice Cream - Confectionery - Sweet Hampers

Helium Balloons - Toys

FREE DELIVERY



Family run business of 30 years, call us for a free no obligation quote

Finance available, buy now and pay later

5 Lupin Works, Worcester Road, Kidderminster DY10 1JR
Phone: 01562 822855 – Email: sales@twshq.com

THE SOCIAL CALENDAR

Date	Time	Details	Contact	Telephone
Wed 6 th	6pm-7pm	Evening Food Bank opening. PAGE 11		
Thurs 7 th		GREEN GARDEN WASTE BINS EMPTIED TODAY		
	10.00	Drop-In Session at the Parish Church		
	10.00	Rock Pathfinders step out from Droitwich Gateway car park PAGE 21		
	7.30	Fun Quiz Night, Fighting Cocks, Stottesdon PAGE 9		
Fri 8 th		Guttersnipe add punk music to the laughter, The Fighting Cocks, Stottesdon PAGE 9		
Sat 9 th	7.00	Bill Lennon in concert at Victory Hall, Clows Top PAGE 27		
Sun 10 th		Deadline for application for a Ludlow Rotary Grant PAGE 7		
Mon 11 th	6.30	Creative Writing Group, Library, Love Lane PAGE 5		
	8.00	Horticultural Society meet at St Mary's Place, Love Lane PAGE 19		
Tues 12 th	7.30	Breakfast Club, CM Golf Club. Cllr John Greaves speaks		
	7.30	Cleobury WI meet in the Market Hall		
Wed 13 th	10am	Walking For Health step out from the Market Hall		
	10am	Coco Coffee Morning, Market Hall		
	7.30	Royal British Legion, Sport & Social Club		
Thurs 14 th		BLACK RUBBISH WHEELIE BINS AND RECYCLE BOXES EMPTIED TODAY		
Sat 16 th	9.30-12.30	Cleobury Country Farmers Market, in and around St Marys Church		
Tues 19 th	7.30	The Reading Group meet at the Library PAGE 41		
Thurs 21 st		GREEN GARDEN WASTE WHEELIE BINS EMPTIED TODAY		
		Its World Curlew Day. Join Curlew Walk – details www.curlewcountry.com PAGE 36		
	10.00	Rock Pathfinders walk from Astley Village Hall PAGE 21		
	7.30	Bingo Night, Fighting Cocks, Stottesdon PAGE 9		
Mon 25 th	7.30	The Nearly Dead Poets Society meet in the Library, Love Lane		
Wed 27 th	10.00	Walking for Health from the Market Hall		
	10.00	CoCo Coffee Morning, Market Hall		
	7.45	Clows Top Gardening Club, Victory Hall PAGE 5		
Thurs 28 th		BLACK RUBBISH WHEELIE BINS AND RECYCLE BOXES EMPTIED TODAY		
Fri 29 th		The Solar Mohican entertain at The Fighting Cocks, Stottesdon Page 9		
		LOOKING FORWARD TO MAY.....		
Sun 1 st	3.00	Service to open the new access path at St John's, Doddington PAGE 19		
Thurs 5 th		GREEN GARDEN WASTE WHEELIE BINS EMPTIED TODAY		



The future of the Friends of Cleobury Mortimer Library will be decided at a meeting to be held in the Town Library at 2.00 on Tuesday, April 5th.

There are three remaining committee members and others who have shown an interest in the work of keeping the Friends going and organising events to entertain and show off this fine facility.

If you have an interest in reading and furthering the success of the library, you are welcome to attend and have your say in the matter. Survival and success will be down to enthusiasm and teamwork in a friendly atmosphere.

Tele:- 01299-272757 *Hands on Printing* **Email:- clickclick2@hotmail.co.uk**
Mobile 07708 587787

All digital media printed to 6"x4" 5"x7" 8x6" 10"x8"
CANVAS WRAPS FROM 12"x16" - 30"x20"
ENLARGEMENTS FROM 12X10" TO 24X36"
 FROM PHOTO'S, DIGITAL MEDIA & 35mm SLIDES

PASSPORT PHOTO'S ONLY £4-00
WHILE YOU WAIT

MOST VIDEO FORMATS TRANSFERRED TO D.V.D.
 USB or SD cards

INCLUDING VHS - VHSC - SONY 8 - DIGITAL 8 - Hi8 - MINI DV & BETAMAX
 REEL TO REEL & CASSETTE
AUDIO TAPES & OLD LPs TO CD

PHOTO & VIDEO FILES TRANSFERRED FROM MOBILES TO DVD ETC.

STANDARD 8 - SUPER 8 FILMS TRANSFERRED TO D.V.D.
 USB or SD cards
DAMAGED PHOTOGRAPHS RESTORED ETC.

BIRTHDAY AND CELEBRATION BANNERS

Look Who's 50 Today!

Video Filming Service

VINYL BANNERS - BUSINESS CARDS - SHORT RUN FLYERS - INVITATIONS - ORDERS OF SERVICE

B-W OR COLOUR PHOTOCOPIES
SELECTION OF PHOTO FRAMES
 Traditional Studio Portraits and Pet Photo's

43, High St.
 Cleobury Mortimer.
 DY14 8DQ

 **LACON CHILDE SCHOOL** 
 the future begins here
 Headteacher: Darren Reynolds

1735



Lacon Childe School, Love Lane, Cleobury Mortimer, DY14 8PE Tel. 01299 270312 email - admin@lacon-childe.org.uk


LUDLOW SALVAGE
 ~ Est 2017 ~
 Reclaimed Building Materials and Architectural Antiques

Station yard, Station road,
 Woofferton, Ludlow SY8 4AW

T 07805 312168
@ ludlowsalvage@gmail.com
f /ludlowsalvage
📷 /ludlowsalvage

WWW.LUDLOWSALVAGE.CO.UK

BoomeranG
 of Cleobury Mortimer
 private hire travel

- Friendly, reliable service
- Local & long distances
- Fully council licensed (up to 12 passengers)
- Airport transfers
- Courier service
- All occasions catered for

Tel: 01299 271257, Mob: 07411 142755, Email: stuart.boomerang@yahoo.co.uk

Cleobury Mortimer Golf Club

At Cleobury Mortimer Golf Club we believe that a really enjoyable golf day takes more than just a great golf course. We make sure that your whole experience, from the friendly welcome in the golf shop to your drinks and meal in our relaxed clubhouse, is all part of a day you'll remember.



Everyone Welcome

Membership available.

Just some of the many benefits of joining Cleobury Mortimer Golf Club

- Access to full length 27- hole golf course
- Opportunity to achieve and maintain a handicap
- Family, Friendly Environment
- Playing opportunities at all times of the week
- A range of competitive opportunities
- Open dawn to dusk 363 days a year.

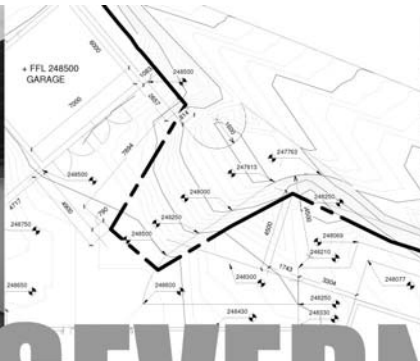
We look forward to meeting you at Shropshire's friendliest golf club.



01299 271 112 (ext 1)

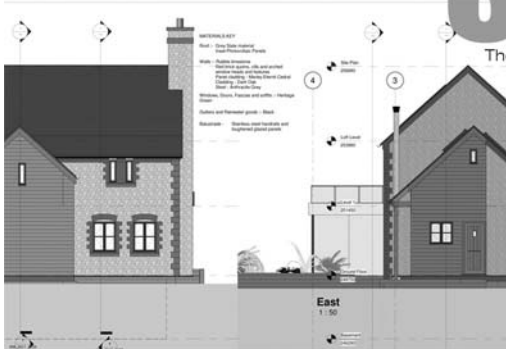
pro@cleoburygolfclub.com

www.cleoburygolfclub.com

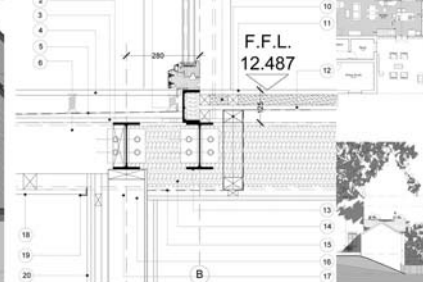


SEVERN

architects



The Guard House, Cleobury Mortimer, DY14 9BD



We are a friendly Shropshire based architectural practice with plenty of experience in all kinds of residential projects large and small. Using the latest 3D software package and technology we can turn your virtual dream home into a reality.

Contact us now on 07825 759484 or email julie@severnarchitects.co.uk for your consultation

Our Architectural Design Services include

- Design & Feasibility Studies
- General project Advice
- 3D Modelling
- 2D CAD Drawing
- Planning Advice and Submissions
- Building Regulation Applications
- Tender & Construction Drawings
- Contract & Project Management

RIBA 

Chartered Practice

KIDDERMINSTER

SELF STORAGE AND REMOVALS



STORAGE

Free insurance . Flexible Terms
Fixed Price Guarantee . No hidden costs

REMOVALS

Professional Removal Service
Est. over 25 years

PACKAGING MATERIALS

Boxes, Bubblewrap, Tape Etc. for sale
Free local deliveries on orders over £20

01562 744088

www.kidderminsterselfstorage.co.uk

Unit 11 Finepoint Way, Stourport Road, Kidderminster DY11 7FB
info@kidderminsterselfstorage.co.uk

Have you heard your first Curlew of 2022 yet? If so, we'd like to know about it, please. We've already had several reports.

The Clee Hill Community Wildlife Group, together with Shropshire Ornithological Society, is again going to try and locate all the breeding pairs in the area, find the nests and put an electric fence around them to protect the eggs, then attach radio tags to the chicks and track them to find out what happens to them. We need the help of Clarion readers to know where to look, please.

In 2021, we had an extremely welcome increase in the local population from 8 to 10 pairs. We think that is the result of the nest protection we carried out in 2018 and 2019, when 4 – 5 young from protected nests went on to fledge. Curlews spend the first year and a half of their life on coastal estuaries, then return to their natal area to breed when they are two years old. It's possible that Curlews will turn up at new sites for the first time in 2022, so all records are potentially very helpful.

The electric fences work. No fenced nest was wholly predated in 2021. Saving eggs from predation reduces by almost half the length of time the eggs and chicks are at risk before they can fledge.

Our project appears to be working, so if you see or hear a Curlew, please tell us.

Our bird survey is now underway, but it's not too late to join in. You would make three visits to a survey square, each for about 3 hours, in early and late April, and mid-June. You mark where you see Curlew, Lapwing and other Target Species on a map. The map will be sent to you, along with simple survey instructions.

There will be a Bird Walk on Clee Hill, starting at Cleeton St. Mary, and lasting about three hours. It provides informal on-the-job training for participants in the bird survey that feel they would benefit, but it is open to anyone else who wants to come. We expect to

see and hear two pairs of Curlew, Red Kite, Kestrel, and several of the other target species. Arrangements have not been finalised at the time of writing, but it is likely to be during the weekend of 9 – 10 April. You will be able to find details, including time and date, on our website, www.ShropsCWGs.org.uk

We are also trying to locate Lapwing, Kestrel and breeding Red Kite. We are starting a nest-box scheme for Kestrels, to help with a research project to try to find out why their numbers are going down. We can learn a lot in Clee Hill, which is a County hotspot with probably 8 – 9 breeding pairs. If you see any of these three species, please let us know.

If you see or hear a Curlew, Lapwing, Kestrel or Red Kite, or want to join our survey, please contact

Chris Bargman (01299 270514, email: chcwg@shropscwgs.org.uk)

POTHOLE OF THE MONTH



This prize example of Shropshire's talent for letting holes in the road grow free was just outside Lacon Childe School. We're lucky no child fell down it and was lost forever.

The irony of this photo is that it was taken on the morning after a Town Council meeting, when Shropshire Council reported 21,000 potholes had been mended. In fairness it must be said that within a week this hole had been filled in. But 200 metres away in Childe Road, another nasty example was not touched. You do wonder why. JR

ONE STOP ROOFING

The Flat Roof Specialists

- Rubber, Fibreglass & Felt
- Re-pointing & Chimney Repairs
- Fascias & Guttering



Take advantage of our offer: Replace your flat roof Making EPDM (rubber) your choice for a long lasting, weatherproof & high slip resistant membrane, with a lifespan of 50 years, **get it for the same price as felt**, which only carries a 10 year guarantee!

Replace your flat roof with EPDM (rubber) & add a skylight or lantern, giving extra light to your room starting **from as little as £400!!**

Freephone 0800 0855277 * 07538 471274

www.onestop-roofing.co.uk

onestoproofinguk@gmail.com

Family business est. 35 years.
All repair work undertaken

Proud members of
Checkatrade.com
Where reputation matters

CLEOBURY SEAFOOD & FREEZER CENTRE

6 Newhouse Farm - Tenbury Road - Cleobury Mortimer

01299 271345

Ready Meals

*We stock a wide range of ready meals, from the ordinary to the extra ordinary !
Plus a range of Vegetarian, Gluten Free and Vegan meals.*

Mr Dave's

*Meat, Chicken, Prawn and Vegetarian Balti, Madras Curry
Mr Dave's extra large naan, plain and garlic & coriander.*

Fish

*Cod, Haddock, Plaice fillets, Sea bass, Lemon sole, Cod Loins, Smoked Haddock.
Battered & breaded fish fillets. Young's Jumbo Cod Fish Fingers.(Very Popular)*

Seafood

*Raw king Prawns, Squid, , whitebait, cooked tiger prawns, scallops, seafood cocktail.
Hot & Spicy Prawns, Breaded Cod & Plaice Goujons*

*New Fish Cakes Thai Style Cod & Prawn, Smoked Haddock, Mozzarella & Spring Onion,
Sea Bass, Cod, Lime & Ginger.*

Fruit and Vegetables

Potato Products

Bannister Jacket Potatoes, Oven chips, Sweet Potato Fries Twister Fries, Hash Browns, Spicy Wedges

Chicken Products

Southern Fried Breaded Chicken Steaks, Breaded Chicken Goujons, Chicken Nuggets, Chicken Bites.

Gateaux for all occasions

BENNETTS ICE CREAM

Opening Times 9am to 4.30pm Mon to Friday. Saturday 9am to 12

Visit our web site www.cleoburyfreezercentre.co.uk

Cleobury Clarion April 2022

Page 52



"We tried artificial flies. We tried lures. We tried live bait. Nothing works ... it's like they're psychic!"



"Blood-curdling screams. Hayes, will do nothing to help us catch a fish."



CLEOBURY COMMUNITY HUB

Coffee Shop, Climb61, Youth Events

Mondays - 9:30am - 8pm

Tuesdays - 9:30am - 9pm

Fridays - 9:30am - 5:30pm

February didn't go exactly to 'our' plan, due to the news that has dominated headlines; the war in Ukraine. We had not expected to be supporting Krzysztof Horemski in his effort to take donations to Poznań, Poland. A 17 hour straight drive from Kidderminster. However, that is exactly what we did as a community. Poznań has taken in over 200,000 refugees and our unplanned donations appeal showed how a small, rural community can come together to support those in need in a massive way. The following week we held an offering and collection for Samaritans Purse, they have setup field hospitals in areas where injured soldiers and civilians can be triaged and helped. We raised £656.50! The next plan is to network with households that are planning on sponsoring refugees. We would like to help in anyway we can and are actively chasing up how we can speed up the process of visas, vetting and finally bringing those in desperate need to our beautiful part of the world. Please get in touch if you're going through this process, we would love to support you.

FOCUS ON: Easter Week: 11th -15th April 2022

Monday 11th - Wednesday 13th: Holiday Club 9:30am - 3:30pm (FREE with HAF Voucher)

Good Friday (15th) - FREE Hot Cross Buns, Easter themed crafts and puzzles for the family: 9:30am-1:30pm

Don't forget our regular activities:

Mondays - Coffee Shop, Rock Tots, Soft Play, Kids Climbing Club, Youth Climbing Club, Climb61 Bouldering.

Tuesdays - Climb61 Bouldering, Soft Play, Coffee Shop

Wednesdays - Hub Youth - Wed 2nd first one of Feb (alternate weeks)

Thursdays - Hub Youth - Thurs 10th first one of Feb (alternate weeks)

Fridays - Climb61 Bouldering, Soft Play, Coffee Shop

Climb61 Session Times - To book: www.smypp.org.uk

Mondays 1:15pm-2:45pm, 6:30pm-8pm


Tuesdays - 9:30am-11am, 11:15am-12:45pm, 2:15pm-3:45pm, 4pm-5:30pm, 5:45pm-7:15pm,

Fridays - 9:30am-11am, 11:15am-12:45pm, 2:15pm-3:45pm, 4pm-5:30pm



@cleoburycommunityhub

@saintmarysyouthproject @cleoburycommunityhub



LUDLOW FIREWOOD

~ Est 2019 ~

Suppliers of Premium Grade Ready
to Burn Firewood, Beautifully Crated
and Delivered to Your Door



T 07949 318014

@ ludlowfirewood@gmail.com

Instagram /ludlowfirewood

Facebook /ludlowfirewood

Station yard, Station road, Woofferton, Ludlow SY8 4AW

WWW.LUDLOWFIREWOOD.COM

Available in Barrow bags and
nets for all your access
requirements.

RWS
*R. Weavers
Services*

Stove Installations, Service and Repair

- All solid fuel wood burners and boilers supplied and installed
- Chimneys relined and twin wall systems built
- Chimney Pots, Cowls, Carbon Monoxide alarms and Air Bricks fitted
- All Stoves and Fires serviced including chimney sweep
- Hetas Landlord Safety Certificates

Tel: 01299 272712 Mbl: 07807 343006
email: info@rweaversservices.co.uk



Lower St Garage

7 Lower St, Cleobury Mortimer. DY14 8AA



- M.O.Ts on cars, motor bikes & small commercial vehicles
- Tyres, Tyre fitting,
- Puncture repair and Tracking.
- Diagnostics, Air conditioning
- Welding.
- Service and Repairs to most vehicles.
- Delivery and Collection Service Available

Contact The Team at Lower St Garage on: 01299 270208

Booton Brothers



Construction

Rich: 07445298747

Mike: 07853225401

bootonbrothers@outlook.com

All building work undertaken

Elite Sweeps

Professional Chimney Sweep

& HETAS Stove Installer

- ✓ Prompt, reliable & friendly service.
- ✓ Cowls and Chimney Pots fitted.
- ✓ Fully qualified and fully insured.
- ✓ Guild certificates issued after every sweep.
- ✓ HETAS Approved Installer.



Call Eddie Tel. 01299 382222 / 07895 612915

www.elitesweeps.co.uk



I.P.T. GROUND SOLUTIONS

Over 30 years experience

For all pipe installations:

- Sewage • Storm drainage
- Blockage/Repairs • Ditches
- Grass Cutting / Hedge Trimming
- Driveways • Ground clearance

For all your ground needs

Contact Ian on:

T: 07870 384 096

E: ian.ptaylor@yahoo.com

W: iptgroundsolutions.co.uk

BOOK YOUR
MOT WITH US



LEWIS MOTORS KINLET

01299 841 391



SERVICING & REPAIRS TO ALL MAKES & MODELS

- Clutches & Cambelts
- Exhausters, Batteries & Tyres
- Wheel Alignment
- Diagnostics
- Recovery
- Welding

Follow us on Facebook: [LewisMotorsKinlet](https://www.facebook.com/LewisMotorsKinlet)

Clebury Clarion April 2022

Page 55



EVERYTHING INTERIOR UPHOLSTERY

REUPHOLSTERY SERVICES:

- AUTOMOTIVE
- CARAVANS
- CAMPER VANS
- TRADITIONAL & MODERN
- COMMERCIAL & BESPOKE
- DOMESTIC
- CARPET & UPHOLSTERY CLEANING
(in partnership with WE GLEAM)

OVER 30 YEARS EXPERIENCE



CONTACT US TODAY

Unit 19 Old Station Business Park, Cleobury Mortimer, DY14 8SY
07961 712683 / 07961 792103
www.everythinginterior.co.uk
email: everythinginterior@outlook.com

Spring is upon us, it's good to see slightly better weather. But the downside of longer days and sunshine is the re-emergence of the infamous Nottingham Knockers. So called as the scam apparently originated in that City and they travel around knocking on people's doors trying to sell shoddy goods under the guise of being rehabilitated offenders or "genuine" lads looking to raise money for a good cause. These people are anything but genuine and it is suspected that they are a front for more sinister crimes such as burglary or distraction crimes. Distraction crimes work like this. There are two people involved, one of whom knocks at the door and engages the resident long enough for the second person to try to gain entrance at the rear and steal anything to hand. A purse or handbag that holds money or a Bank Card is ideal as the victim may not notice for some time that anything is missing. Bank Cards that have the WiFi symbol that can make purchases up to £100 by just tapping on the card machine are particularly attractive these days. Take a few simple precautions to safeguard your bank cards, don't leave them easily found by this kind of criminal. There are an increasing number of reports of large vehicles (usually a white van) with occupants acting suspiciously. Recently in Betjeman Way in the town, a man was seen taking photos of properties for no obvious reason. As residents and good neighbours in any street, many of us will be alerted to an unknown vehicle with the occupants not having a specific purpose. Vehicles with no commercial markings are not necessarily involved in suspicious activities, but commercially marked vehicles are much more likely to be genuine trades conducting legitimate business. If in doubt, try to note the registration number, make and colour of a vehicle and any description of occupants you can give to the Police. In these circumstances call 101 and report it. The Police advise if you feel threatened in any way to dial 999 instead. Sadly, our Police service is constantly stretched and unable to follow up on every non-emergency situation, however if multiple reports in a specific area are made, there is a better chance that these will be followed up on. We don't have a permanent Police presence in the town, but your Neighbourhood Watch team are working with the Inspector responsible for the Police Safer

Neighbourhood Teams (SNT) to discuss specific concerns in Cleobury. Moving on to the current round of Scams, we are seeing an increase in the Scams involving text or email messages saying here is a delayed parcel delivery that needs to be paid for, messages that appear to be from HMRC about tax refunds or underpayments, the BBC about licence payments and so on. The common factor in all these is that the scammer wants you to give out bank card details including the security code on the rear of the card. Often the payment request is quite small so appears to be innocent. NOT SO! If you give out these details to someone you don't know or trust, that opens the door for the scammer to make several more significant purchases using your card details and so emptying your bank account. Your bank will still try to hide behind the excuse that you willingly revealed your details and therefore it's your loss. However, Banks are slowly coming round to being more sympathetic to their customers, but you can't rely on that. Follow the guidance that tells us to be wary of any text, email or telephone call where you are asked for money or Bank card details. If in doubt, delete the message, hang up the phone or verify the request by calling your Bank, the registered number of the alleged organisation or simply ask a relative or a neighbour to help. Reputable companies will understand if you delay responding, scammers will not and try to pressure you into acting. There are many websites and agencies that can provide help or information. If you have access to the internet, you can find information here on my web pages. www.beat-the-scams.info or if you have Facebook, look at our Neighbourhood Watch group which is Cleobury Mortimer and District Neighbourhood Watch. Over 650 members in our community look at or post in this group. Finally, if you have internet access either at home or on a mobile device, I would strongly recommend the following websites. The first is great advice about online scams www.takefive-stopfraud.org.uk and the second is regular updates from the National Fraud and Cyber Crime Reporting Centre www.actionfraud.police.uk This second site allows you to register for updates. I would recommend either or both to help you stay safer. As always, be aware and stay safe. *Nigel*



Professional Family Estate Planners



- Wills or Lasting Powers of Attorney from £95
- Free Will reviews
- Probate support
- Care home fee avoidance
- Free funeral plan with every Will
- Family Protection Trusts

"A lifetime's attention to complex legal issues as a retired Detective Superintendent and now a Private Client Lawyer means **you can definitely trust Mark and his daughter Lauren** to write your Will"

T: 01299 251442
E: info@ambalegalservices.co.uk
W: ambalegalservices.co.uk



- Appointments by telephone, video link or in the comfort of your own home
- Over 45 years' experience in law
- Friendly and professional support for you and your family
- Call us up to see how we can help!



Consequential Planning are your local independent financial advisers. We have a highly qualified team with extensive experience in all aspects of financial planning. We can offer help and advice on investments, pensions, protection and mortgages.

Telephone 01299 407128
 to arrange a free financial review or visit:
www.cnsq.co.uk





MAINTENANCE SUPERVISOR

We have a vacancy for a Maintenance Supervisor.

Initially working fifteen hours per week but there will be additional hours as the role develops and for covering other staff.

This is a newly created post to supervise our maintenance staff, liaise with contractors, ensure risk assessments and health and safety checks are carried out, working to a maintenance schedule and assist with a range of maintenance and grounds work throughout the parish of Cleobury Mortimer under the supervision of an appointed Line Manager to ensure a safe and tidy environment is provided for the public.

The role would be flexible with working hours usually expected between Monday and Friday with very occasional weekend work.

Health and Safety, First Aid and other required training will be provided.

Personal Protective Equipment will be provided.

We offer 28 days holiday per year (pro-rata).

Salary – NJC Scale Point 12 - £22,571 pro-rata (£11.73 per hour).

Does this sound interesting to you? If so, please telephone 07483 112290 or email cleobury.council@gmail.com for an application form, full job description and person specification.

Closing date for applications is Friday 22nd April 2022.



Burning Blocks

www.burningblocks.co.uk



A safe and easy to use alternative for logs for both wood stoves and open fires

Discount for local delivery quote: "family10" at the checkout

- Easy to light / roaring fire in under 5 mins
- Easy to stack / 10kg packs
- High heat / similar to coal on output
- Each briquette lasts over an hour
- Low moisture / 8% moisture maximum
- Store undercover

UK wide delivery available, approx. 2 days

buy online at www.burningblocks.co.uk

For more information:-

Email: burningblocks@gmail.com Website: www.burningblocks.co.uk FB: <https://www.facebook.com/burningblocksbriquettes>



Richard Haines

The Worcestershire Chimney Sweep

- ◆ Traditional & Power Sweeping Services
- ◆ Certified Chimney Sweep
- ◆ Insurance Recognised certificate issued



M: 07752 116629 T: 01584 781358 E: lostcity5@hotmail.co.uk

www.theworcestershirechimneysweep.co.uk



KINLET C OF E PRIMARY SCHOOL

Love to Learn – Learn to Love



- Outdoor play areas
- Kind – Inspire – Nurturing – Learning – Eco-friendly -Teamwork
- Small family atmosphere

www.kinlet.shropshire.sch.uk

admin@kinlet.shropshire.sch.uk

Telephone: 01299 841210



THE ARCHERS OF TEME

Ever fancied having a go at archery? Who hasn't? Perhaps you were brought up on tales of Robin Hood or were intrigued by Olympic archery coverage from London 2012 (gosh that was a long time ago). Perhaps you love the archery scenes in many Hollywood movies such as Hunger Games, Hawkeye or the many incarnations of Robin Hood the movie ('Men in Tights' is my favourite). And then there's that well known cider advert. For many of us archery has an innate attraction.

The Archers of Teme has a long history, beginning in Ludlow Castle in 1857 at the height of archery's popularity as a sport of the Victorian, genteel classes though soon to be overtaken in some areas by croquet! As seen in the photograph, ladies were often on the shooting line in greater numbers than gentlemen. The club was indeed founded by Lady Curtis of Caynham Court. Members included a number of military officers, a sprinkling of Sirs and landed gentry as well as a remarkable number of Reverends, all invariably accompanied by their wives.



During the early 1900s the club flourished under club secretary Capt Hill-Lowe, RN and Beatrice Hill-Lowe of Court of Hill, Nash.

Beatrice won the Ladies bronze medal at the 1908 London Olympics.

The club dissolved, we think, in the late 1920s but was reformed in 1984 by local enthusiasts including international and Olympic archer Roy Matthews MBE.

What do we get from archery? For some it is the focus and determination required to score another 'gold.' For others it is the fun and excitement of 'hunting' imitation animal targets in the woods, or roving across a countryside course with the thrill of launching arrows high in the sky trying to send the arrow as far as you can; there are many different aspects to archery.



Archery requires a reasonable level of upper body fitness but you don't have to pull the 140lbs bows as they did at Agincourt. Bows come in all sizes to suit all ages from 10 years to seniors. It is truly an inclusive sport where all ages, male and female and those with disabilities can all shoot on the same line.

Today we shoot outdoors at Brimfield and Little Hereford Sports club on Sunday afternoons from April to October and indoors in the winter. We shoot modern recurve and compound bows as well as traditional longbows.

For more information please visit our website: archersofteme.org.uk or contact chairman@archersofteme.org.uk

Mark North



EnergyZone

Integrated Renewable Solutions

SHROPSHIRE HEAT PUMPS

EnergyZone are one of Cleobury's best kept secrets. We are one of the largest and longest established renewable engineering companies in the UK installing heat pumps since 2003. 14 in house engineers with over 130 years combined experience completing over 1000 Domestic and Commercial systems all over the UK. Based next to Hobsons Brewery in Cleobury Mortimer we are your local experts in heat pump systems.

Heat pumps are rapidly becoming the standard heating system for all new build properties, as they always have been in many parts of Europe, and the Government is offering a very generous incentive to encourage anybody with an Oil, LPG or Electric boiler to replace this with a heat pump.

Replacing your boiler with a heat pump has many advantages;

- Lower running costs for your heating - up to 50% lower
- No dependence on fuel deliveries
- Removal of current boiler under our scrappage scheme
- Up to a 10-year warranty with a 20 to 25-year life expectancy
- Government backed Renewable Heat Incentive (RHI) to help cover installation cost over 7-years (available until March 2022)

What can EnergyZone offer?

Complete design and installation of a heat pump system, including all paperwork required to enable you to claim the maximum Government incentive

Upgrade of your old radiators and hot water cylinder if required

Local support with annual servicing through our EZcare package

With the current Government incentive now is a great time to consider scrapping your old fossil fuel boiler and installing a heat pump that is not only good for the planet but also your pocket.

Call us for a free home assessment from one of our engineers.



Fully accredited installers of the brands above ensuring the correct model is selected for your home

01299 270011

www.energyzone.co.uk sales@energyzone.co.uk



Community Contacts for Clarion Readers

CEMETERY ADMINISTRATOR	Theresa Ray	07703 965 064	theresa.25016@hotmail.co.uk
CLEOBURY COUNTRY CENTRE		01299 272300	In Love Lane, 9 to 5 Mon to Fri.
CLEOBURY DENTAL PRACTICE		01299 271747	www.cleoburydental.co.uk
CLEOBURY CARERS	Michelle	01743 341995	carerssupport@shropshire.gov.uk
CLEOBURY COMPASSIONATE COMMUNITIES	Katja Jones	07966 080111	Tuesday and Thursday at the Medical Centre
CLEOBURY MORTIMER LIBRARY		01299 272301	Open 9 to 7 Mon, 9 to 5 Tues/Fri and 10 to 1 Sat.
LOCAL POLICE	PC Wayne Strangwood	07773 054 587	wayne.strangwood@westmercia.pnn.police.uk
CLEOBURY MORTIMER GUIDES	Fiona McCallum	07805 737 555	
CLEOBURY MORTIMER SCOUTS	Lowri Hughes		cleoburybeavers@gmail.com
CRIMESTOPPERS		0800 555 111	Free Police contact. Talk in confidence, to report any crime.
DOMESTIC VIOLENCE HELPLINE		0800 783 1359	Women's Aid, 24 Hour support:
HOME FROM HOSPITAL		01584 878046	Help over the first weeks back home from Age UK
MARKET HALL	Kim	01299 272732	markethall@cleobury.org.uk
MEDICAL CENTRE		01299 270209	Out of surgery hours, use the Shrop Doc Service.
SHROP DOC		111	Service available evenings and weekends
THE MEN'S SHED	Pete Blackburn	07776 243 584	petblack@me.com
THE PHARMACY		01299 270219	Closes for half day on Saturday. Delivers prescriptions
ST ELIZABETH'S CATHOLIC CHURCH	Angela Flowers	01299 270318	Sunday Mass at 9.00am
NIGHTINGALE NURSING FUND	Rosemary Abbiss	01746 718451	
TOWN COUNCIL	Clerk Matthew Sheehan	01299 271154	Cleobury Country Centre 9 to 2 pm, Mon to Fri. www.cleobury.org.uk . Council meets in the Centre on the first Monday of the month
POST OFFICE		01299 270211	In the Select and Save Grocery Store, Church Street
SAINT MARY'S YOUTH PROJECT	Mark Greaves	07828 116810	mark.stmarys@live.co.uk
SHROPSHIRE COUNCIL		0345 678 9000	
SOUTH SHROPSHIRE YOUTH FORUM		01584 874922	
VOLUNTARY CAR SCHEME		01299 666119	Mandy Smith
WASTE DISPOSAL		0345 678 9007	The contractor is Veolia
WATER SUPPLY EMERGENCIES	Severn Trent	0800 783 4444	
NEWLIFE CHURCH	Pastor E Stirrup	01562 630595	Sunday services at 10.30

Collect the Clarion in Cleobury from: Select and Save Grocery, Londis Store, Cleoburrs, Cleobury Cafe, The Severn Hospice Shop, Mid Counties Co-op, Purslows, The Library, Swift's Bakery Tea Room and Tracey's Kreation..

Out in Cleobury Country at: Heath Farm Meats, **Bagginswood;** **Clee Hill Stores;** **Clows Top Stores;** The Sun and Slipper, **Mamble;** **Hopton Bank Service Station;** ; **Ludlow Library;** **Mahorall Cider Farm;** The Colliers Cafe & Shop, **Rock;** The Fighting Cocks, **Stottesdon;** The Duck Inn, **Chorley;** The Live and Let Live, **Neen Sollars;** The Eagle and Serpent, **Kinlet;** Parker Motors, **Ditton Priors.**

Copies are also available from the Parish Churches in: Cleobury Mortimer, Bayton, Doddington, Hopton Wafers, Milson, Neen Savage and Neen Sollars.

Missed your Clarion? Cleobury Mortimer Library keeps the current month's copy on file and all back issues are available to read as pdfs from www.cleoburyclarion.co.uk.

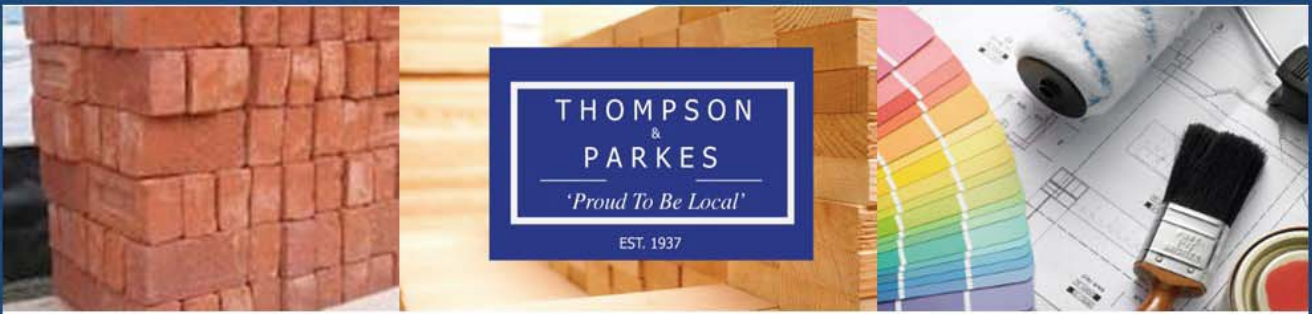
DEADLINE FOR THE MAY ISSUE: APRIL 22nd. CONTRIBUTORS PLEASE NOTE THAT THIS IS THE LAST POSSIBLE DATE TO RECEIVE REPORTS.

Editor and Advertising Sales: Jim Reynolds, 4 Childe Road, Cleobury Mortimer, Shropshire DY14 8PA. Telephone: 01299 270642 Mobile: 07410 977 212

E-Mail: editor@cleoburyclarion.co.uk or uncle.jim@icloud.com

The Clarion On The Web: www.cleoburyclarion.co.uk

Printed by Badger Print and Design of Shifnal, 01952 730511



Your local specialist supplier of
Insulation, Timber, Plywood and all Building Materials

THOMPSON & PARKES

SANDSTONE - Best offer locally!

A natural product, Stoneplus Raj Indian sandstone has subtle tones and ideal for traditional patios.

15.25m² patio packs including 900 x 600, 600 x 600, 600 x 300 and 300 x 300 slabs

Just £24.50/m² - £373.63 +VAT per pack

While stocks last and available at all outlets!



Proud to be Local

www.thompsonandparkes.co.uk

Stocking and Delivering all Your Building and DIY Materials

Kidderminster 01562 745881
Oldington Trading Estate DY11 7QP

Oreton 01746 718414
Cleobury Mortimer DY14 0TH

Stourport 01299 534545
Minster Road DY13 8AB